





# ProGARM® 6101 Ladies' Coverall

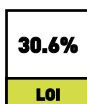
## EN STANDARDS

			
EN ISO 11611: 2015	EN ISO 11612: 2015	EN 1149-5: 2008	IEC 61482-2: 2009
Class 1, A1	A1, B1, C1, F1	Pt.5 :2008 Pt.3 :2004 Charge Decay	Class 1 EBT50= 9.5cal/cm <sup>2</sup>

## OPEN ARC



## LOI



## BOX TEST



## FABRIC



Also available in orange

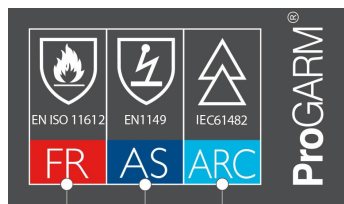


## PRODUCT DETAILS

Sizes: 8-16, REG LEG (29"/75cm)

Colour: Navy/Orange

Code: 6101



FLAME RESISTANT    ANTISTATIC    ARC FLASH

## PRODUCT DESCRIPTION

Ladies-fit premium quality coverall in VXS+ super soft fabric 240g/m<sup>2</sup> designed to offer protection to female workers in Petrochemical, Utility and associated industries.

**SEAM GUARANTEE**  **100% INHERENT** 

# ProGARM® 6101 Ladies' Coverall

## FEATURES AND BENEFITS

- Mandarin collar // Maximum neck protection
- Kneepad pockets // Wear with kneepads for extra comfort
- Chest Pockets with zippers // Secure storage
- Gas monitor loop // Secure fixing point
- SafetyICON™ on arm // Visual EN Norm icon system
- 5cm FR AS Reflective Tape // Double stitched for longer life
- Phone Pocket on sleeve with flap // Safe and secure
- Cuff tabs with VELCRO® Brand fasteners // Close fit around
- Side access pockets // With entry inside coverall
- ThermSAFE™ plastic FR Zippers // CE Certified
- Internal elastic 2 Point adjustable waistband // Ensures close fit
- Triple stitched side seams // Lifetime quality assurance
- Easy-Stretch™ side panels // Maximum wear comfort
- Action back // for improved comfort

## FABRIC SPECIFICATION

VXS+ 240W 240g/m<sup>2</sup> Woven Inherent Fabric



### INHERENT PROTECTION

FR properties last the lifetime of the fabric & do not wash out



### INSTANT EXTINGUISHING PROPERTIES

Ultimate protection against Flame & ARC Flash Hazards



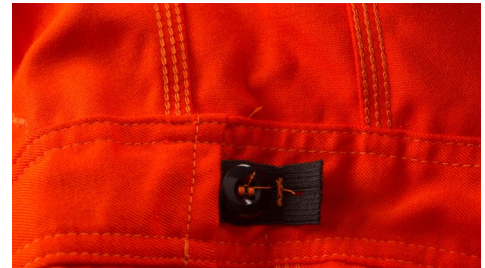
### GREAT COMFORT

Breathable, soft to wear & fantastic to touch

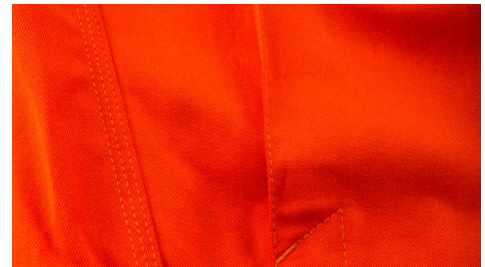


### HIGHLY DURABLE

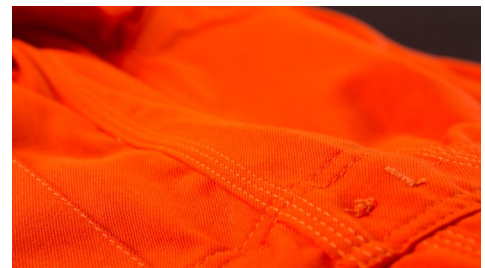
Colourfast with less than 3% washing shrinkage



Internal elasticated waistband for improved



Internal kneepad pocket to fit ProGARM® 2240 Kneepad



Reinforced crotch panel for increased strength

## CARE INFORMATION

- Do not bleach, do not boil, do not use soap based products - only detergents.
- Dirty clothing may lead to a reduction in protection.
- Company will not accept liability for garments where care labels have been ignored, neglected, defaced or removed.
- Always store in clean dry conditions.
- Do not store in places subject to direct strong sunlight.

