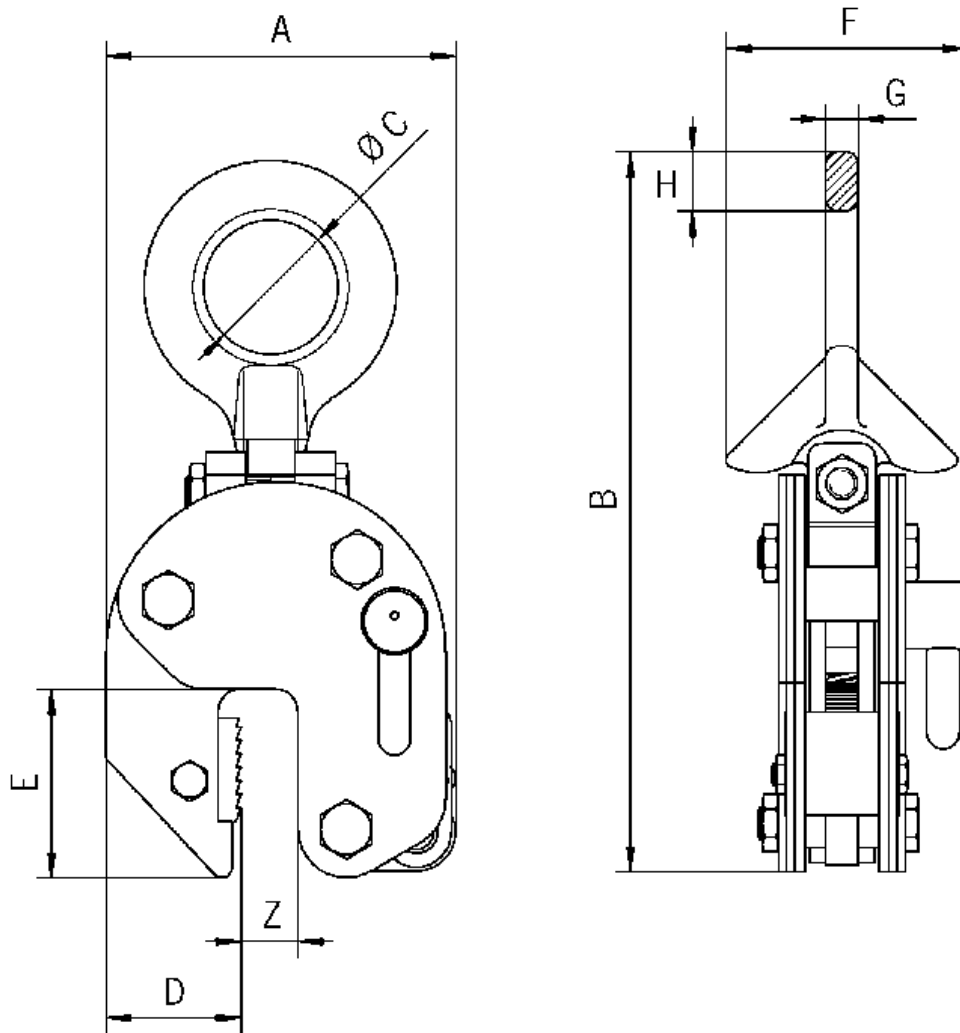


DESCRIPTION

The CY Series of plate clamps can be used on all structural steel plates up to a surface hardness of 300 Brinell. This clamp is designed to be used with 2 leg sling for lifting longer plates. With the swivelling hooking the CAMLOK CY series of clamps can be fitted to a steel plate in any position. It can turn a plate from the horizontal to the vertical or lift over the edge. Sufficient clamping load is guaranteed by the special shape of the hooking.

DIAGRAM



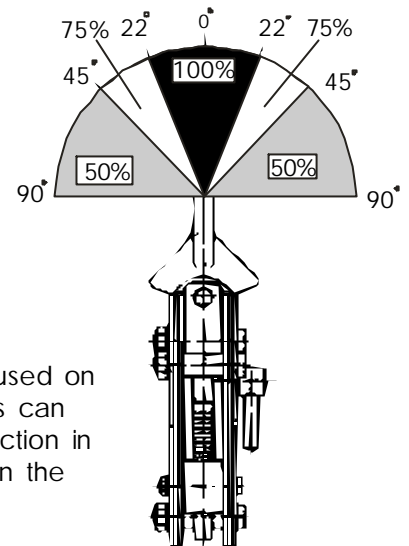
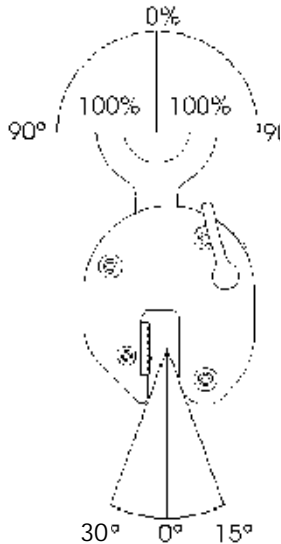
TABLE

MODEL	WLL Tons	Plate m m Z	Weight kg	A	B	C	D	E	F	G	H
CY1	1,0	0 - 20	4,2	127	270	50	49	70	95	12	23
CY2	2,0	0 - 32	13.3	192	382	80	75	96	132	20	30
CY3	3,0	0 - 32	13.3	192	382	80	75	96	132	20	30

Load Diagram
Sling Vertical

Load weighing the maximum W.L.L may be lifted and turned through 180 degrees in the plane of the clamp

Load must hang no more than shown in diagram when suspended by the clamp only.

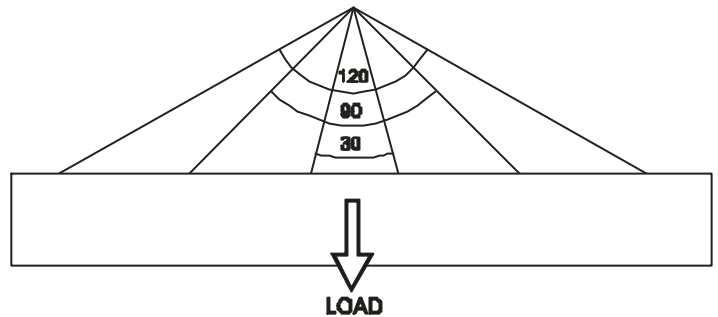


The clamp can be used on edge and side loads can be lifted with a reduction in the W.L.L. as shown in the diagrams.

Safe loads for two clamps

ANGLE	CY1	CY2	CY3
0-30	2000kg	4000kg	6000kg
30-90	1000kg	2000kg	3000kg
90-120	500kg	1000kg	1500kg

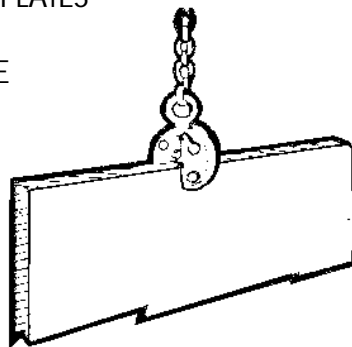
There is a reduction in the WLL when used with a 2 leg sling as shown in the table



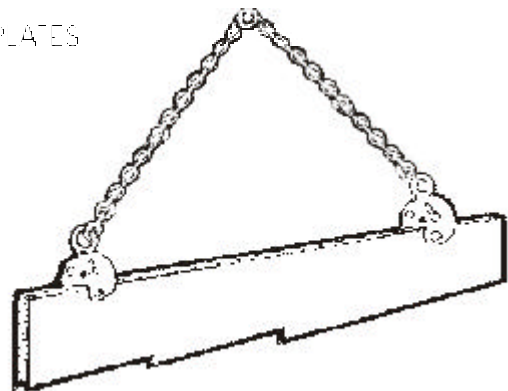
RESTRICTIONS

The clamp is not suitable for steel over 300 Brinell, stainless steel, lead, certain grades of copper and materials over 120° surface temperature. The working load limit of the clamp should be as close as possible to the actual load to be lifted. This ensures that the clamp is working at maximum efficiency. Loads below 20% of the working load limit should be avoided extra care must be taken when lifting plates in the lower 20% of the rated jaw capacity. Excessive wear and a reduction in working life can be caused if a clamp is continuously used to lift the same thickness material.

FOR SHORT PLATES
USE Cz92IN
PREFERENCE



FOR LONG PLATES



OPTIONS

CY/P with chain lock

The standard cam operated locking mechanism can be replaced with a chain pull locking system.