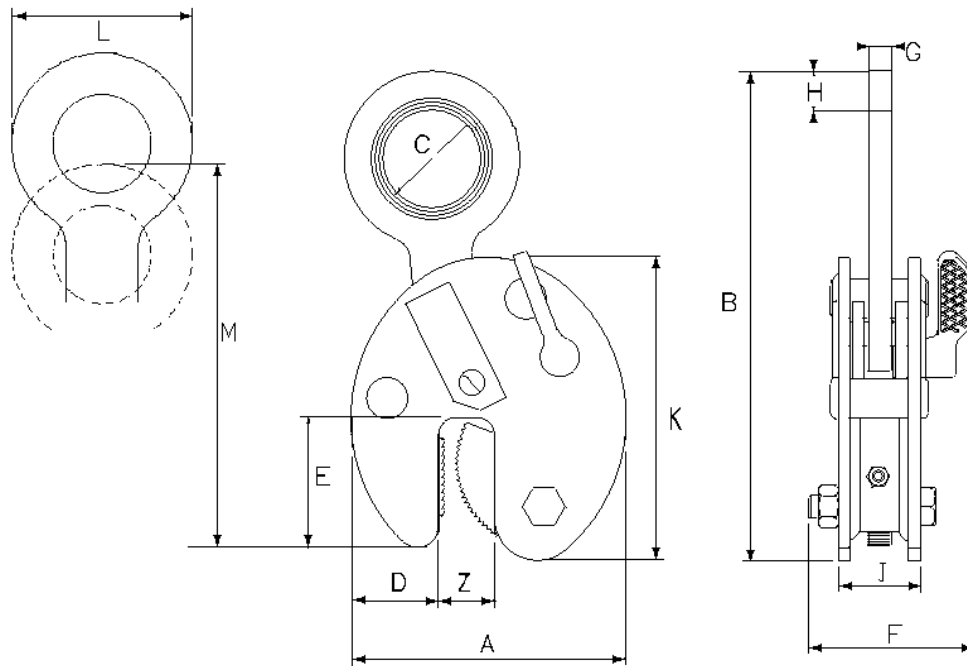


DESCRIPTION

The CZ Series of plate clamps can be used on all hot rolled structural steel plates and sections up to a surface hardness of 300 Brinell. They can be used to lift plate from the horizontal to vertical position and vice versa through 180 degrees. The necessary grip required to lift a plate is achieved by increasing the force applied to the clamp from the lifting sling by a system of links. The gripping force is proportional to the load lifted and self-actuating, the greater the load applied to the clamp the greater the gripping force. To initiate the self-actuating force a spring is incorporated into the clamp to give an initial bite on the material. When the load is applied the jaw teeth bite into the plate effectively becoming one with the material and allowing a safe lift. If the plate should start to slip the cam shape of the jaw turns with the material and increases the gripping force. This range of clamps are fitted with a hold open and lock closed device.

DIAGRAM

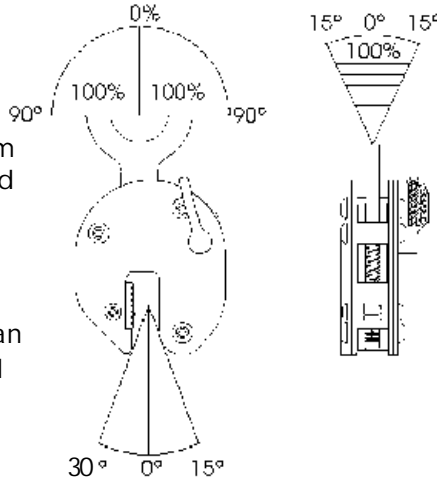


MODEL	WL Tons	Plate mm Z	Weight kg	A	B	C	D	E	F	G	H	J	K	L	M	N
CZ 1,0	1,0	0-20	4	140	254	51	48	70	83	13	19	42	152	89	233	254
CZ 1,0L	1,0	20-40	5	161	260	51	48	70	83	20	19	42	152	89	233	254
CZ 2,0	2,0	0-32	11	197	323	67	68	93	110	20	20	60	216	108	291	323
CZ 2,0L	2,0	30-60	13	228	330	67	68	93	110	20	20	60	216	108	291	323
CZ 3,0	3,0	0-32	12	197	371	80	68	93	110	20	30	70	305	158	442	484
CZ 3,0L	3,0	30-60	15	228	390	80	68	93	110	20	30	70	305	158	442	484
CZ 4,0	4,0	0-32	12	197	371	80	68	93	129	20	30	70	305	172	450	492
CZ 4,0L	4,0	30-60	18	228	390	80	68	93	129	20	30	70	305	172	482	524
CZ 6,0S	6,0	0-50	21	293	484	89	95	143	129	25	35	80	305	200	503	545
CZ 6,0L	6,0	50-100	28	362	524	89	95	143	129	25	35	80	305	200	503	545
CZ 8,0S	8,0	0-50	26	293	492	89	95	143	129	25	42	90	307	200	550	613
CZ 8,0L	8,0	50-100	32	362	524	89	114	143	129	25	42	90	307	200	615	678
CZ 10,0S	10,0	0-50	30	293	545	110	95	143	139	25	45	130	307	240	550	613
CZ 10,0L	10,0	50-100	37	362	545	110	114	143	139	25	45	130	307	240	615	678
CZ 12,0S	12,0	0-50	54	360	613	130	125	162	154	30	55	130	307	240	550	613
CZ 12,0L	12,0	50-100	63	460	678	130	175	162	154	30	55	130	307	240	615	678
CZ 15,0S	15,0	0-50	75	360	613	130	125	162	204	45	55	130	307	240	550	613
CZ 15,0L	15,0	50-100	88	460	678	130	175	162	204	45	55	130	307	240	615	678
CZ 20,0S	20,0	0-65	123	462	755	130	165	210	235	45	65	135	476	260	674	755
CZ 20,0L	20,0	65-130	136	560	805	130	195	210	235	45	65	135	490	260	724	805
CZ 30,0S	30,0	0-65	195	462	732	60	165	210	295	65	-	195	476	170	667	732
CZ 30,0L	30,0	65-130	295	560	797	60	195	210	295	65	-	195	490	170	732	797

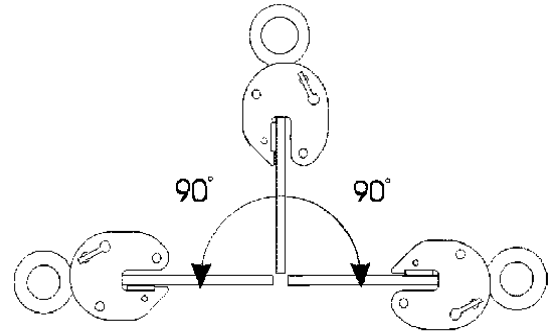
Load Diagram with slings vertical

Loads weighing the maximum W.L.L may be lifted and turned through 180 degrees in the plane of the clamp

Load must hang no more than 30 degrees when suspended by the clamp only.



Loads weighing the maximum W.L.L may be lifted through 15 degrees in the plane of the clamp

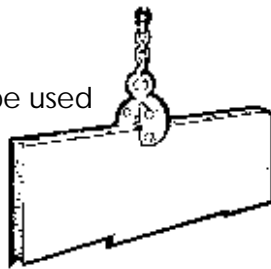


RESTRICTIONS

The clamp is not suitable for steel over 300 Brinell, stainless steel, lead, certain grades of copper and materials over 120° surface temperature. The working load limit of the clamp should be as close as possible to the actual load to be lifted. This ensures that the clamp is working at maximum efficiency. Loads below 20% of the working load limit should be avoided extra care must be taken when lifting plates in the lower 20% of the rated jaw capacity. Excessive wear and reduction in working life can be caused if a clamp is continuously used to lift the same thickness material.

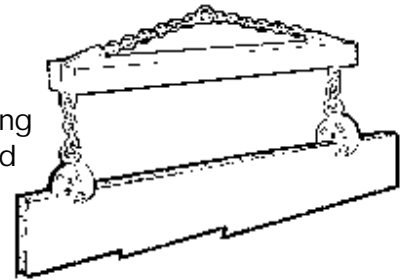
FOR SHORT PLATES

A single clamp can be used



FOR LONG PLATES

2 clamps and a lifting beam must be used



OPTIONS The Cz92 range of clamps can also be supplied with alternative throat sizes. The narrow throated clamp has been developed for lifting thin light sheets. The pad side is moved closer to the moving jaw, this increases the initial grip of the clamp by causing the spring to be stretched more. e.g. CZ920.5 /NT Jaw capacity 0-8mm

A large throated clamp is created by moving the pad side away from the moving jaw. This has the advantage that the clamp has a jaw and mechanism best suited to the load applied and therefore is working at maximum efficacy. e.g. CZ920.5/L Jaw capacity 15 - 30mm

CZ/C with chain & master link

The standard clamp is fitted with a hooking which can be replaced with a short length of chain and master link. This aids in the attachment to larger crane hooks and prevents accidental release when fast lowering.

CZ/DG dragging clam

The CZ dragging clamp has been designed with extra thick shell plates that allow it to be used for pulling material into position.



CZ/SL sharp leg clamp

The CZ clamp can be supplied with alternative body shapes such as the sharp leg to aid the attachment to stacked plates



CZ/K with Link

This clamp is supplied with the link only, the customer can fit their own chain