

### Checkmate FABX1 Fall Arrest Block

The FABX1 is available with galvanised or stainless steel cable, or rope/webbing made with Dyneema®. Up to 10 metres (33ft) in length the FABX1 offers lightweight handling, excellent servicability and exceptional performance.

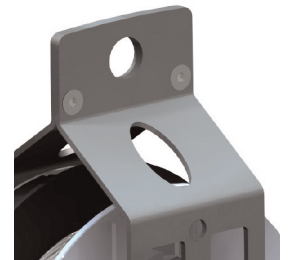
# Xcalibre

**SAFETY BY DESIGN**



#### Independent Brake Pawls

The two pawls work independently of one another, this ensures a "fail safe" capability if one should stop working.



#### Load Bearing Steel Chassis

The internal hot rolled steel chassis provides a structural metallic core beneath the external protective housing.



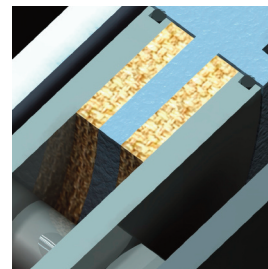
#### BCS Brush Cleaning System

The entry aperture has a pair of opposing brushes to minimise take up of debris into the device.



#### Carry Handle Attachments

Optional shoulder strap and carrying handle are available which can be easily fitted by the user.



#### Sealed Brake Module

The Brake Module is sealed by the use of "O" rings which stops water or dust ingress affecting the brakes efficiency.



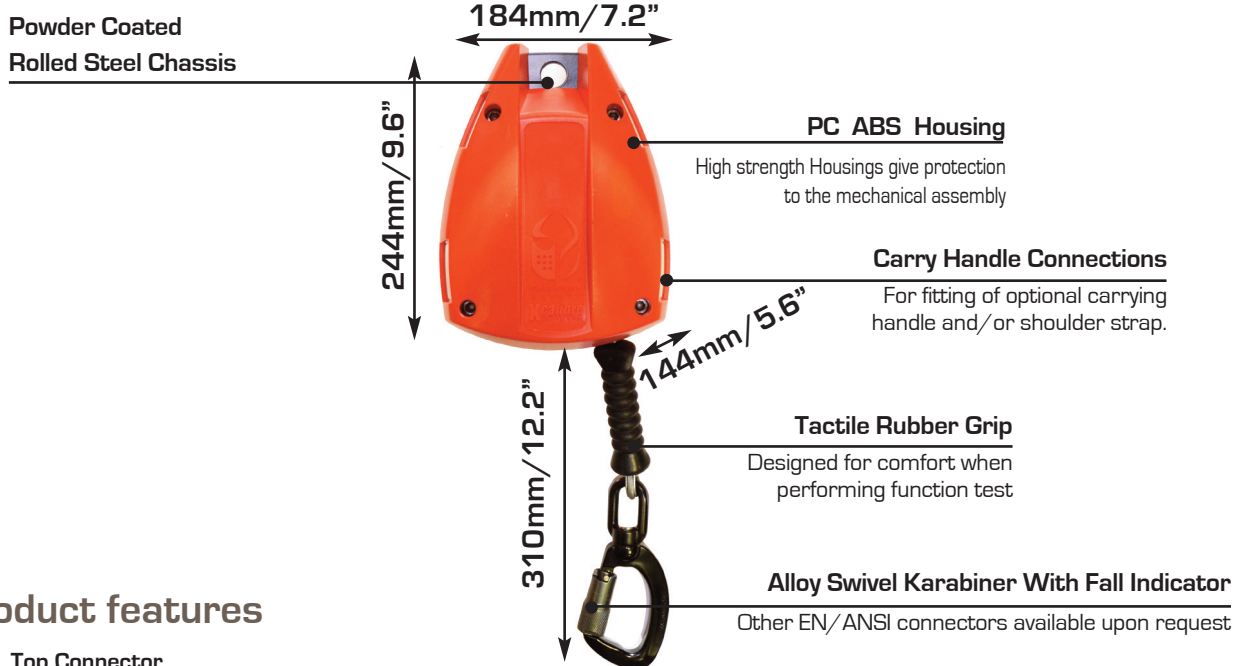
#### Load Indicator Hook

The swivel hook includes a fall indicator, which clearly shows if the device has been subjected to a shock load.

## ordering information

| Part No.      | Length           | Description                           | Weight         |
|---------------|------------------|---------------------------------------|----------------|
| ▼ FABX1-10C   | 10 metres (33ft) | FAB galvanised wire (EN)              | 4.1 kg (9lbs)  |
| ▼ FABX1A-10C  | 10 metres (33ft) | FAB galvanised wire (ANSI)            | 4.1 kg (9lbs)  |
| ▼ FABX1-10CS  | 10 metres (33ft) | FAB stainless wire (EN)               | 4.3kg (9.5lbs) |
| ▼ FABX1A-10CS | 10 metres (33ft) | FAB stainless wire (ANSI)             | 4.3kg (9.5lbs) |
| ▼ FABX1-10F   | 10 metres (33ft) | FAB rope made with dyneema® (EN)      | 3.5kg (7.7lbs) |
| ▼ FABX1A-10F  | 10 metres (33ft) | FAB rope made with dyneema® (ANSI)    | 3.5kg (7.7lbs) |
| ▼ FABX1-8W    | 8 metres (26ft)  | FAB webbing made with dyneema® (EN)   | 3.5kg (7.7lbs) |
| ▼ FABX1A-8W   | 8 metres (26ft)  | FAB webbing made with dyneema® (ANSI) | 3.5kg (lbs)    |

Other lengths also available from 8-10m (26-33ft)



## product features

- ▼ **Top Connector**  
11mm alloy twist lock karabiner approved to EN362 & rated to 24kN [EN ONLY] or Steel triple lock approved to ANSI Z359.12 & rated to 52kN
- ▼ **Galvanised Steel Wire Rope**  
4.50mm dia. 19 x 7 minimum breaking load 15kN
- ▼ **Stainless Steel Wire Rope**  
5mm dia. 7 x 19 minimum breaking load 15kN
- ▼ **Webbing made with Dyneema®**  
20mm x 1.4mm min. breaking load 22kN
- ▼ **Fibre Rope made with Dyneema®**  
5mm dia. min. breaking load 27kN
- ▼ **Capacity**  
8-10m (26-33ft)
- ▼ **Maximum Arresting force**  
Wire rope = 4.4kN(nom) Webbing = 3.3kN(nom)  
Rope = 4.2kN(nom)
- ▼ **Total Arrest distance**  
Max 2.0m [EN] / 54" [ANSI]
- ▼ **User Weight**  
136kg maximum (300lbs)

Dyneema® and Dyneema®, the world's strongest fiber™ are trademarks of DSM. Use of these trademarks is prohibited unless strictly authorized

## principal materials

- ▼ **External Housings**  
PC/ABS High strength and rigidity, UV stabilised
- ▼ **Drum**  
Polyamide 6 Glass Filled
- ▼ **Chassis**  
Hot Rolled Steel, Zinc plated black
- ▼ **Pawl Plate & Ratchet**  
Al. Alloy T6 Hard anodised
- ▼ **Pawls & Spindles**  
Stainless steel, hardened
- ▼ **Bearings**  
Polyamide with PTFE Polytetrafluoroethylene
- ▼ **Shaft**  
Al. Alloy T6 Hard anodised
- ▼ **All Fixings**  
Stainless steel
- ▼ **Swivel Hook**  
Al. Alloy, Rated to 28kN with ANSI gate rating [EN/ANSI]

## standards

- ▼ EN 360, AS/NZS 1891.3:1997 (EN)
- ▼ ANSI Z359.14:2012 Class B
- ▼ OSHA 1910 & 1926



CHECKUSOUT

[www.checkmateuk.com](http://www.checkmateuk.com)

