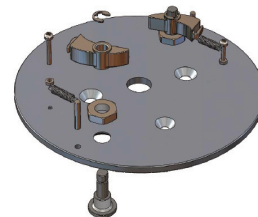


Checkmate FABX2 OS - Fall Arrest Block
 Checkmate Xcalibre FABX2 OS is designed to be used in harsh environments where it may be permanently installed. It is comprised entirely of materials with an offshore corrosion protection. Can form part of a full safe transfer system including a ladder davit and a permanent tag line.

Xcalibre

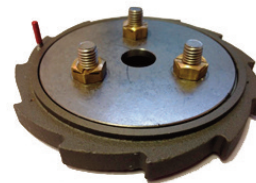
SAFETY BY DESIGN



Brake Pawls & Plate
 Manufactured from aluminium alloy T6 and hard anodised, this plate retains the hardened stainless pawls and spindles.



Housings
 The clear housing allows visual inspection of the enclosed mechanical assembly without the need for removal of the block from its housing.



Sealed Brake Module
 The brake module is a stainless/alloy unit which can be easily replaced after a fall, the "O" rings provide a seal from dust and water ingress.



Load Bearing Chassis
 The internal stainless steel chassis provides a structural metallic core beneath the external protective housing.



Stainless Steel Load Indicating Swivel Hook
 Supplied with a marine grade stainless steel load indicating swivel hook as standard, or a marine grade stainless steel load indicating swivel eye (MoQ's apply).



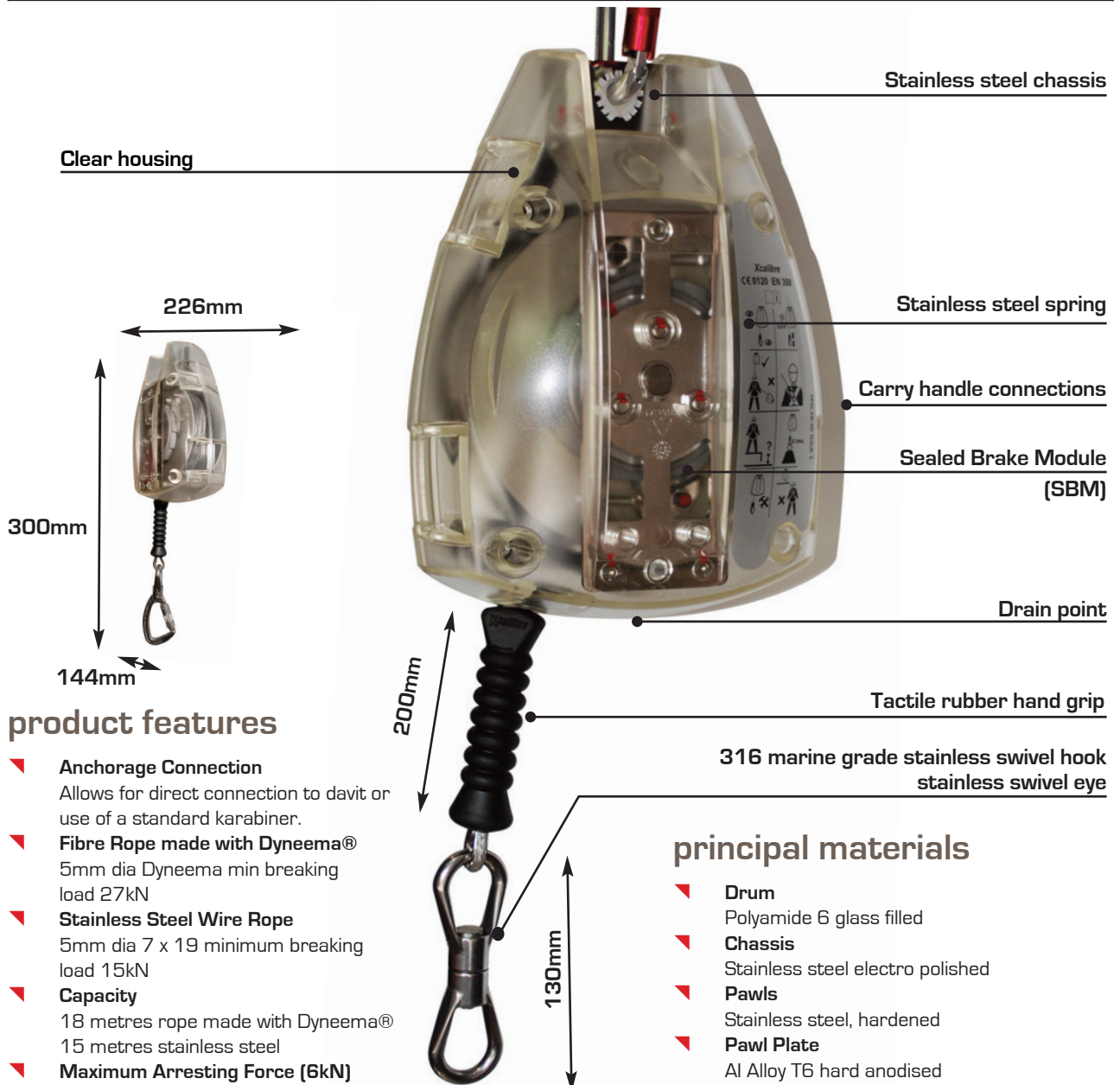
Thermally insulated protective hood
 The optional hood protects the blocks exterior and regulates extreme changes in temperature reducing condensation build up, and protection from bird lime.



Ladder Davit
 Optional made to order davit extends the block above the top rung.

ordering information

Part No.	Description	Weight
▼ FABX2-OS-18F	18m/60ft rope made with Dyneema®	5.6kg/ 12.3lbs
▼ FABX2-OS-15CS	15m/50ft stainless steel cable	7kg/ 15.4lbs
▼ OSD2-000	Ladder davit	17kg/ 37.5lbs



product features

- ▼ **Anchorage Connection**
Allows for direct connection to davit or use of a standard karabiner.
- ▼ **Fibre Rope made with Dyneema®**
5mm dia Dyneema min breaking load 27kN
- ▼ **Stainless Steel Wire Rope**
5mm dia 7 x 19 minimum breaking load 15kN
- ▼ **Capacity**
18 metres rope made with Dyneema®
15 metres stainless steel
- ▼ **Maximum Arresting Force (6kN)**
Rope made with Dyneema® = 3.5kN (nom)
Wire rope = 4.5kN (nom)
- ▼ **User Weight**
136Kg maximum

Dyneema® and Dyneema®, the world's strongest fiber™ are trademarks of DSM. Use of these trademarks is prohibited unless strictly authorized

standards

- ▼ EN 360:2002
- ▼ AS/NZS 1891.3.1997
- ▼ ANSI Z359.14:2012 Class B



principal materials

- ▼ **Drum**
Polyamide 6 glass filled
- ▼ **Chassis**
Stainless steel electro polished
- ▼ **Pawls**
Stainless steel, hardened
- ▼ **Pawl Plate**
Al Alloy T6 hard anodised
- ▼ **Pawl Spindles & Spring**
Stainless steel
- ▼ **Housing**
PC/ABS
- ▼ **Ratchet**
Al Alloy T6 hard anodised
- ▼ **Bearings**
Polyamide with PTFE
- ▼ **Shaft**
Al Alloy T6 hard anodised
- ▼ **Swivel Hook Or Eye**
Stainless steel rated to 23kN

CHECKUSOUT

www.checkmateuk.com

