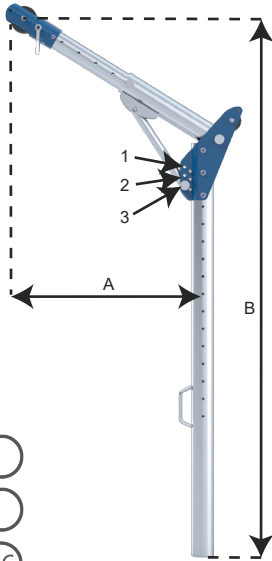


The **G.Davit** is a lightweight EN795 + TS16415 anchorage device for confined space access and working at height situations, for temporary or permanent access. It may be used as an anchor by more than one person simultaneously, providing the MWL is not exceeded.

The equipment has a maximum working load (MWL) of **200kg** for personnel and **250kg** for loads.



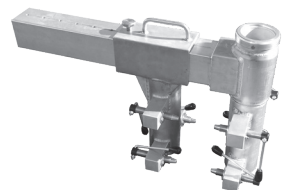
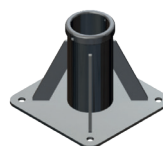
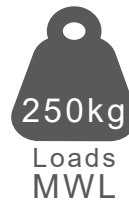
EN795

TS16415

2006/42/EC

- ◆ **Light** 18kg. Manufactured from aluminium.
- ◆ **Safe** Both the G.Winch and G.Saver II can be mounted in an ergonomic position on the same side of the mast, keeping the top operator away from the edge.
- ◆ **Smart** Clever cable routing keeps rope away from the area of operation, reducing risk.
- ◆ **Adaptable** Up to 760mm reach.
- ◆ **Portable** Compact and easy to carry.
- ◆ **Quick** Simple assembly, no tools required.
- ◆ **Reliable** Manufactured in the UK by Globestock; rapid distribution and fast spares response.

D200-80	1	Shortest	350	2160
		Longest	550	2410
	2	Shortest	430	2090
		Longest	665	2300
	3	Shortest	490	2005
		Longest	760	2155



Confined Space Access



Confined space access presents unique risks and challenges.

At Globestock, we understand these risks, which is why we apply our engineering expertise to creating a range of equipment for working in confined spaces, delivering safety products you can trust.

All of our confined space access products are manufactured right here in the UK. Whatever the application, we offer market leading reliability in even the harshest environments.

Depended upon by leading UK companies, including:

**Balfour Beatty, Barhale, Barratt Homes, Severn Trent,
Welsh Water, Thames Water**



**MADE IN
BRITAIN** 