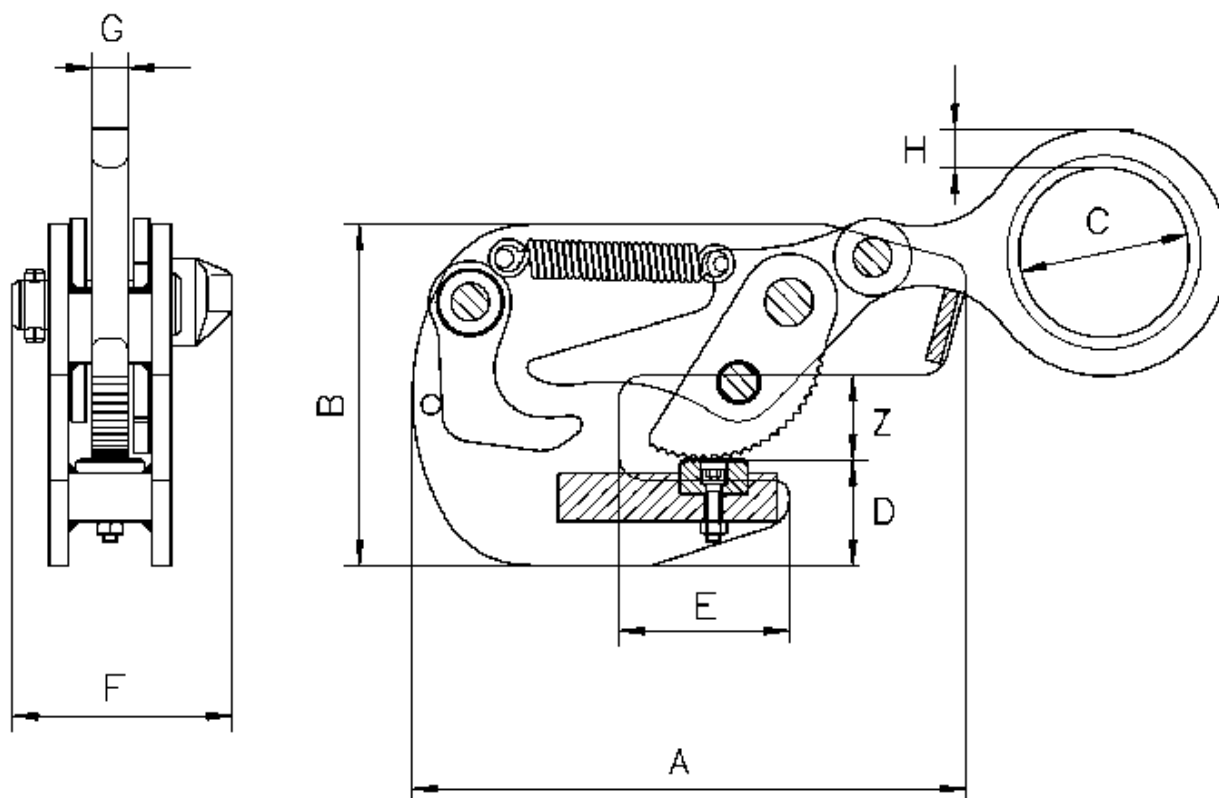


## DESCRIPTION

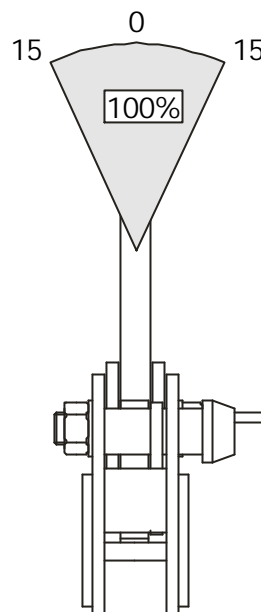
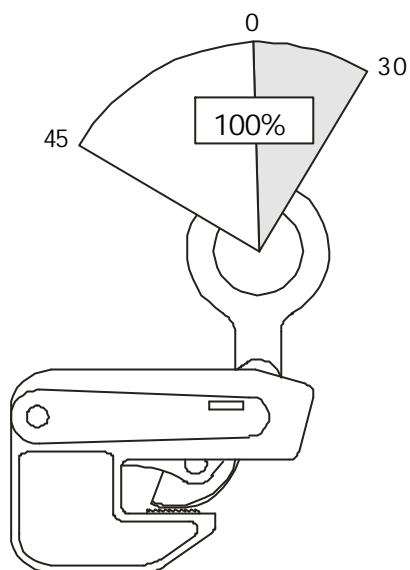
The Camlok series of TTG clamps can be used on girders up to a surface hardness of 300 Brinell. This clamp is designed to lift girders in the "I" position and transport steel beams with the flanges in a horizontal position.

## DIAGRAM



## TABLE

MODEL	WLL Tons	Flange mm Z	Weight kg	A	B	C	D	E	F	G	H
TTG 1,5	1,5	0 - 30	5	225	142	70	45	70	106	16	16
TTG 3,0	3,0	0 - 35	10	275	180	80	56	70	120	19	20
TTG 4,5	4,5	0 - 40	14	300	195	84	60	75	125	19	25
TTG 7,5	7,5	0 - 45	27	355	222	105	65	90	147	22	30

Load Diagram  
Sling Vertical

## RESTRICTIONS

The working load limit of the clamp should be as close as possible to the actual load to be lifted. This ensures that the clamp is working at maximum efficiency. Loads below 20% of the working load limit should be avoided extra care must be taken when lifting beams in the lower 20% of the rated jaw capacity. Excessive wear and a reduction in working life can be caused if a clamp is continuously used to lift the same thickness material.

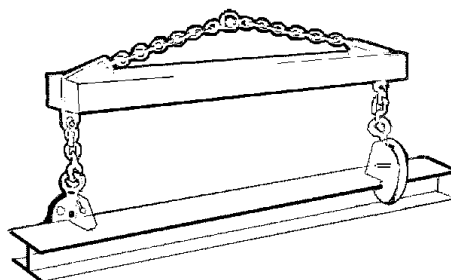
## FOR SHORT BEAMS

A single clamp can be used



## FOR LONG BEAM

2 clamps and a lifting beam must be used



## OPTIONS

The clamp is available in various sizes and lifting capacities and it can be supplied with a chain pull locking mechanism for remote operation. The TTG is ideal for lifting and transporting structural steel beams and girders.



Cad\Technical Serv\Clamps