



Selection advice

If the valve is to be screwed directly into a hydraulic cylinder, please order model VSM-11.

If the valve is to be combined with the directional valve of a power pack, please order model VSM-21.
(see picture on page 368).

Safety-check valves model VSM

700 bar

These safety-check valves are used for those applications where pressure drops must be avoided (e.g. holding of a lifted load). Depending on the location in a hydraulic circuit, these valves can have different functions.

The model VSM-11 can be directly screwed into the oil port of a hydraulic cylinder and works at this location as a "hose break fuse". The design of the VSM-21 is suitable for a combination with VHP directional valves.

At this location the VSM-21 ensures that the pressure is held precisely and that pressure drops caused by operating the directional valve are avoided.

Operation

After closing the relief valve (hand wheel) the cylinder can be advanced via the by-pass. In direction to the cylinder the valves always have free flow. The built-in check valve ensures that a pressurized cylinder (e.g. a lifted load) is held precisely in stop position.

A smooth lowering speed can be adjusted by opening the throttle valve (hand wheel) in order to relieve the pressure.

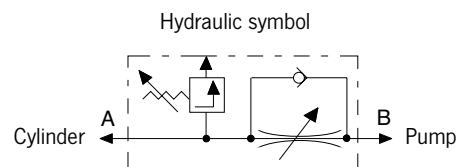
A safety pressure valve protects the cylinder from being overloaded by external loading.

Technical data model VSM

Model	EAN-No. 4025092*	Operating pressure max. bar	Control	Oil-port cylinder side A	Oil-port pump side B	Width mm	Weight kg
VSM-11	*157797	700	Check valve	3/8-18 NPT outer	3/8-18 NPT inner	6	0.9
VSM-21	*158442	700	Check valve	3/8-18 NPT inner	3/8-18 NPT outer	6	1.0

Dimensions model VSM

Model	VSM-11	VSM-21
Length, mm	75	75
Width, mm	25	25
Height, mm	100	100



Throttle-/Shut-off valves model VHM

700 bar

These valves are used to shut-off hydraulic lines especially in multiple cylinder systems. The needle valve VHM-1 also allows to throttle an oil flow especially in connection with lifting applications.



VHM-2



VHM-1

Technical data model VHM

Model	EAN-No. 4025092*	Operating pressure max. bar	Control	Oil ports both ends	Width mm	Weight kg
VHM-1	*154819	700	Needle	3/8-NPT inner	6	0.4
VHM-2	*154963	700	Ball	3/8-NPT inner	6	0.9

Dimensions model VHM

Model	VHM-1	VHM-2
Length, mm	75	75
Width, mm	28	45
Height, mm	100	75

Hydraulic symbol

