



CABLOC™ / Vertical Systems



TECHNICAL DATASHEET PACK

Issue No: 5
Issue Date: 27/05/2014

Contents

Click on the links below to access the required technical datasheet.



	Old Part Number	New Part Number	Datasheet Number
Contents	-	-	-
Component Properties	-	-	-
Typical Cabloc System - In-line Energy Absorber	-	-	1229
Typical Cabloc System - Energy Absorber on Traveller	-	-	1230
Typical Cabloc System - Cabloc Pro & Pass Through Intermediate Bracket	-	-	1231
Typical Cabloc System - Cabloc Universal End Anchorage Plate with Counterweight	-	-	1337
Cabloc Stainless Steel Top Anchor	-	6191032	1220
Cabloc Galvanised Steel Top Anchor	-	6191035	1238
Top Anchor with Shock Absorber	-	6191063	1336
In-line Shock Absorber	-	AC325	1221
Cabloc Pro Int Guide SS	020-116-203	6191019	1224
Cabloc Pro Int Guide	020-116-202	6191002	1122
Cable Guide	-	AC320	1222
Counterweight Guide	-	AC320/3	1334
Counterweight	-	AC323	1335
Cabloc Stainless Steel Bottom Anchor	-	6191033	1223
Cabloc Galvanised Steel Bottom Anchor	-	6191036	1237
Cabloc Hex Swage Bottom Anchor	-	6191038	1128
Cabloc Galvanised Hex Swage Bottom Anchor	-	6191062	1329
Ladder Extension Bracket - Galvanised	-	6180174	1359
Ladder Extension Bracket - Stainless Steel	-	6180175	1360
8mm Hex Swage Toggle	U8S0403	7234011	0906
Cabloc Traveller	-	AC350	1225
Cabloc Traveller with Energy Absorber	-	AC350/4	1234
Cabloc Pro	010-669-601	6199998	0966
8mm 7x19 Stainless Steel Cable By Length	-	AC300SXX	1233
8mm 1x19 Stainless Steel Cable Per M	U80802	7241072	0925
8mm 6x19 Galvanised Steel Cable By Length	-	AC300GXX	1239
Universal End Anchorage Plate	-	AC340	1227
Tensioner with Tension Indicator - Clevis / Eye	-	AC330	1228
Tensioner with Tension Indicator - Clevis / Clevis	-	AC330/1	1318
System Tag EMEA Kit	-	7241241	1253
System Tag EMEA Kit	-	6191052	1346
System Tag EMEA Kit	-	6191039	1350

Cabloc Component Properties

Cabloc Technical Datasheets

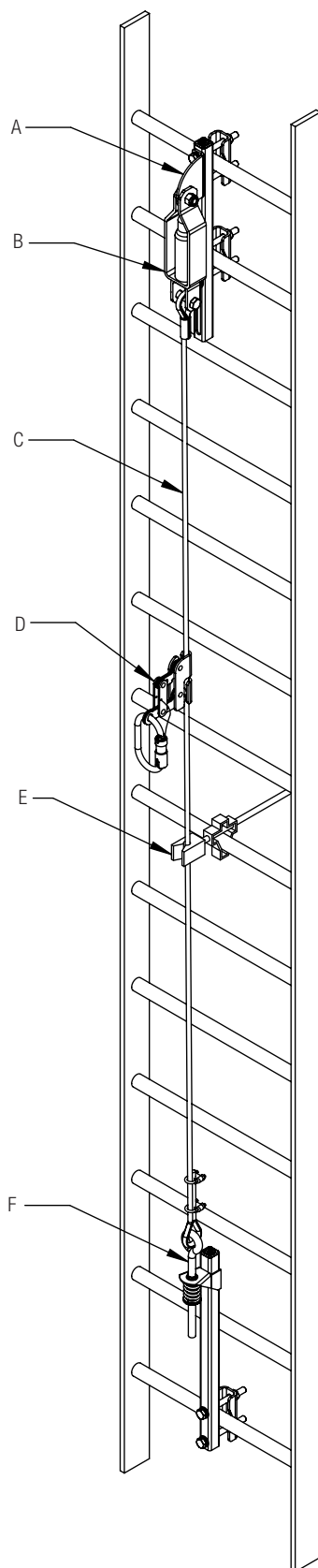


Description	Item Number	Capacity (kg)	Minimum Userweight (kg)	No. Users	Activation Force (kN)	Max deployment length (mm)	Breaking Strength (kN)		Weight (kg)	Operating temp range (°C)	
							Minimum Overhaul (kN)	Ultimate Tensile (kN)		Max	Min
Cabloc Stainless Steel Top Anchor	6191032						15	20	1.65	60	-30
Cabloc Galvanised Steel Top Anchor	6191035						15	20	1.65	60	-30
Cabloc Pro Intermediate Guide Stainless Steel	6191019								0.5	60	-30
Cabloc Pro Intermediate Guide	6191002								0.5	60	-30
Cabloc Stainless Steel Bottom Anchor	6191033								1.7	60	-30
Cabloc Galvanised Steel Bottom Anchor	6191036								1.7	60	-30
Cabloc Hex Swage Bottom Anchor	6191038								1.5	60	-30
Ladder Extension Bracket - Galvanised	6180174						12	16 *	10.5	60	-30
Ladder Extension Bracket - Stainless Steel	6180175						12	16 *	11.5	60	-30
8mm Hex Swage Toggle	7234011						38		0.35	60	-30
Cabloc Pro	6199998	150	50	1	2	390	15		0.99	60	-30
8mm 7x19 Stainless Steel Cable by Length	AC300SXX							36.5	0.24/m	60	-30
8mm 1x19 Stainless Steel Cable Per M	7241072							45.5	0.32/m	60	-30
8mm 6x19 Galvanised Steel Cable by Length	AC300GXX							34.8	0.24/m	60	-30
Cable Guide Standard	AC320								0.44	60	-30
Counterweight Guide	AC320/3								0.44	60	-30
Counterweight	AC323								7.02	60	-30
In-line Shock Absorber 304	AC325	136		1	2	80	15		1.15	60	-30
Top Anchor With Shock Absorber	6191063	136		1	2	80	15		2.6	60	-30
Tensioner with Tension Indicator - Clevis / Eye	AC330								0.81	60	-30
Tensioner with Tension Indicator - Clevis / Clevis	AC330/1								0.84	60	-30
Universal End Anchorage Plate	AC340			1			15	>30	2.38	60	-30
Cabloc Traveller	AC350	136	50	1			15		0.65	60	-30
Cabloc Traveller with Energy Absorber	AC350/4	136	50	1	2	360	15		0.91	60	-30
Cabloc Galvanised Hex Swage Bottom Anchor	6191062								1.6	60	-30

* At maximum extension of 1.3m (51")

Technical Datasheet No: 1229

Typical Cabloc System - In-line Energy Absorber



A	Cabloc Stainless Steel Top Anchor (6191032)
	Cabloc Galvanised Steel Top Anchor (6191035)*
	Ladder Extension Bracket - Galvanised (6180174)*
	Ladder Extension Bracket - Stainless Steel (6180175)*
B	In-line shock absorber (AC325)
C	8mm 7x19 Stainless Steel Cable By Length (AC300SXX)
	8mm 6x19 Galvanised Steel Cable By Length (AC300GXX)*
D	Cabloc Traveller (AC350)
E	Cable Guide (AC320)
F	Cabloc Stainless Steel Bottom Anchor (6191033)
	Cabloc Galvanised Steel Bottom Anchor (6191036)*

For more detailed component information refer to the individual datasheets.

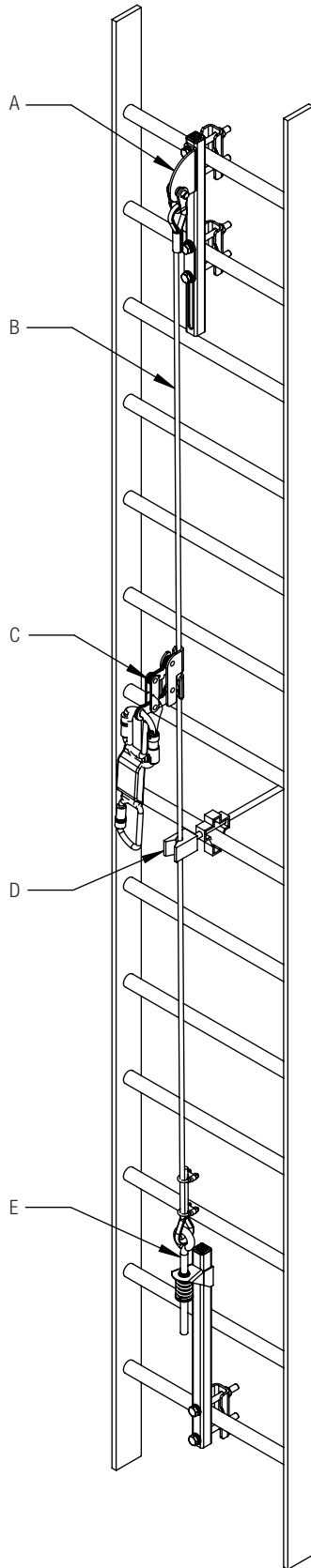
* This item is different to the one illustrated

SYSTEM SPECIFICATION

QUALITY	ISO 9001
CONFORMITY	EN 353-1

Technical Datasheet No: 1230

Typical Cabloc System - Energy Absorber on Traveller



A	Cabloc Stainless Steel Top Anchor (6191032)
	Cabloc Galvanised Steel Top Anchor (6191035)*
	Ladder Extension Bracket - Galvanised (6180174)*
	Ladder Extension Bracket - Stainless Steel (6180175)*
B	8mm 7x19 Stainless Steel Cable (AC300SXX)
C	Cabloc Traveller with Energy Absorber (AC350/4)
D	Cable guide (AC320)
E	Cabloc Stainless Steel Bottom Anchor (6191033)
	Cabloc Galvanised Steel Bottom Anchor (6191036)*

For more detailed component information refer to the individual datasheets.

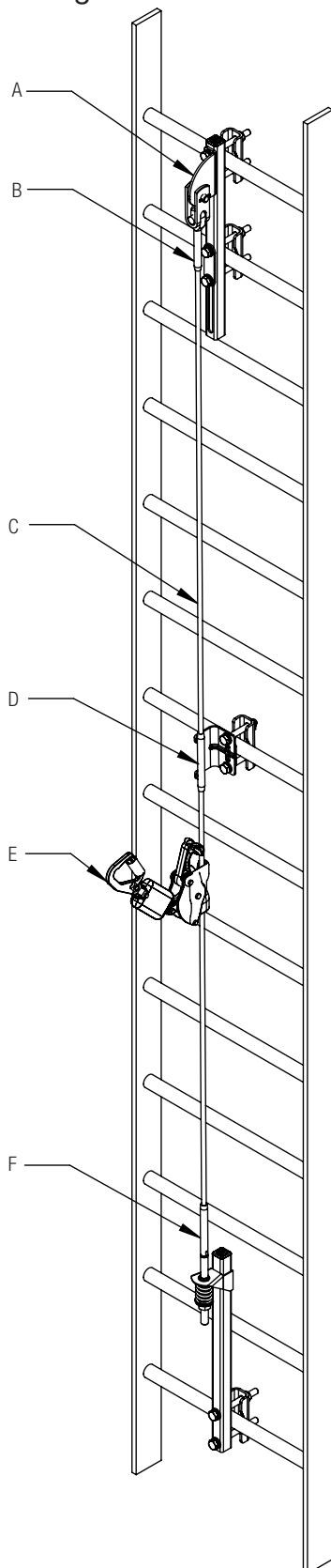
* This item is different to the one illustrated

SYSTEM SPECIFICATION

QUALITY	ISO 9001
CONFORMITY	EN 353-1

Technical Datasheet No: 1231

Typical Cabloc System - Cabloc Pro & Pass Through Intermediate Bracket



A	Cabloc Stainless Steel Top Anchor (6191032)
	Cabloc Galvanised Steel Top Anchor (6191035)*
	Ladder Extension Bracket - Galvanised (6180174)*
	Ladder Extension Bracket - Stainless Steel (6180175)*
B	8mm Hex Swage Toggle (7234011)
C	8mm 1x19 Stainless Steel Cable (7241072)
D	Cabloc Pro Int Guide SS (6191019)
	Cabloc Pro Int Guide Galvanised (6191002)*
E	Cabloc Pro (6199998)
F	Cabloc Stainless Steel Hex Swage Bottom Anchor (6191038)
	Cabloc Galvanised Hex Swage Bottom Anchor (6191062)*

For more detailed component information refer to the individual datasheets.

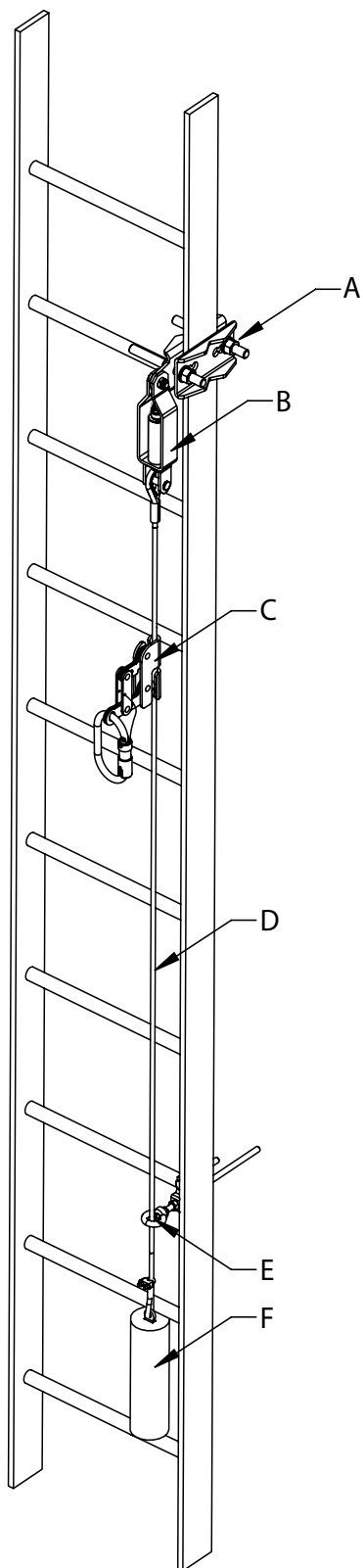
* This item is different to the one illustrated

SYSTEM SPECIFICATION

QUALITY	ISO 9001
CONFORMITY	EN 353-1

Technical Datasheet No: 1337

Typical Cabloc System - Cabloc Universal End
Anchorage Plate with Counterweight



A	Cabloc Stainless Steel Top Anchor (AC340)
B	In-line shock absorber (AC325)
C	Cabloc Traveller (AC350)
D	8mm 7x19 Stainless Steel Cable (AC300SXX) 8mm 6x19 Galvanised Steel Cable (AC300GXX)*
E	Counterweight Guide (AC320/3)
F	Counterweight (AC323)

For more detailed component information refer to the individual datasheets.

* This item is different to the one illustrated

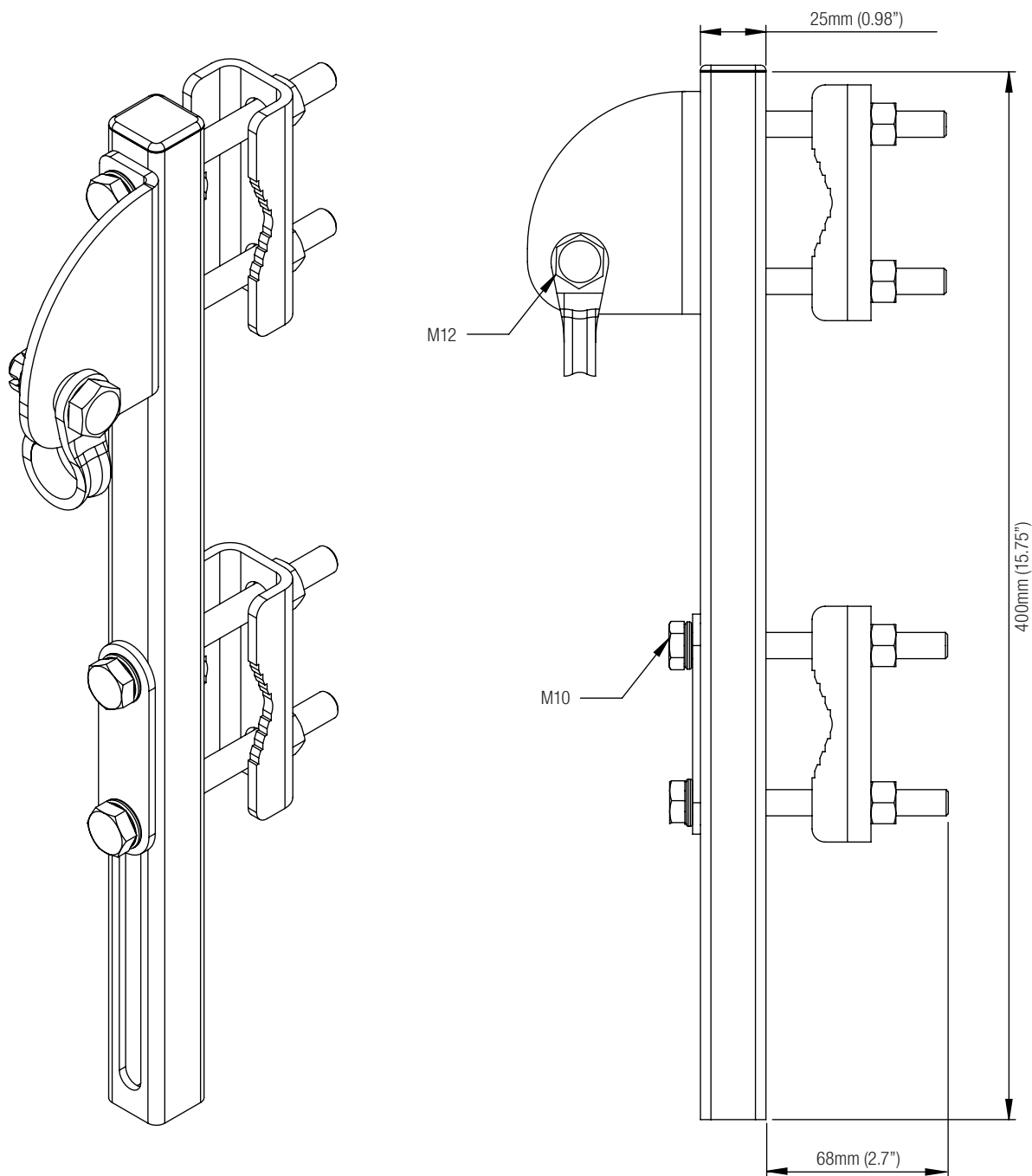
SYSTEM SPECIFICATION

QUALITY	ISO 9001
CONFORMITY	EN 353-1

Technical Datasheet No: 1220

Cabloc Stainless Steel Top Anchor

Part No: 6191032



APPLICATION

Used as a top anchor on the Cabloc vertical system for ladders.

Compatibility: Rung centres 200mm-310mm (7.87"-12.20"). Fits cylindrical rung $\varnothing 12\text{-}\varnothing 30$ (0.47"-1.18") and square rungs 20mm-40mm (0.79"-1.57").

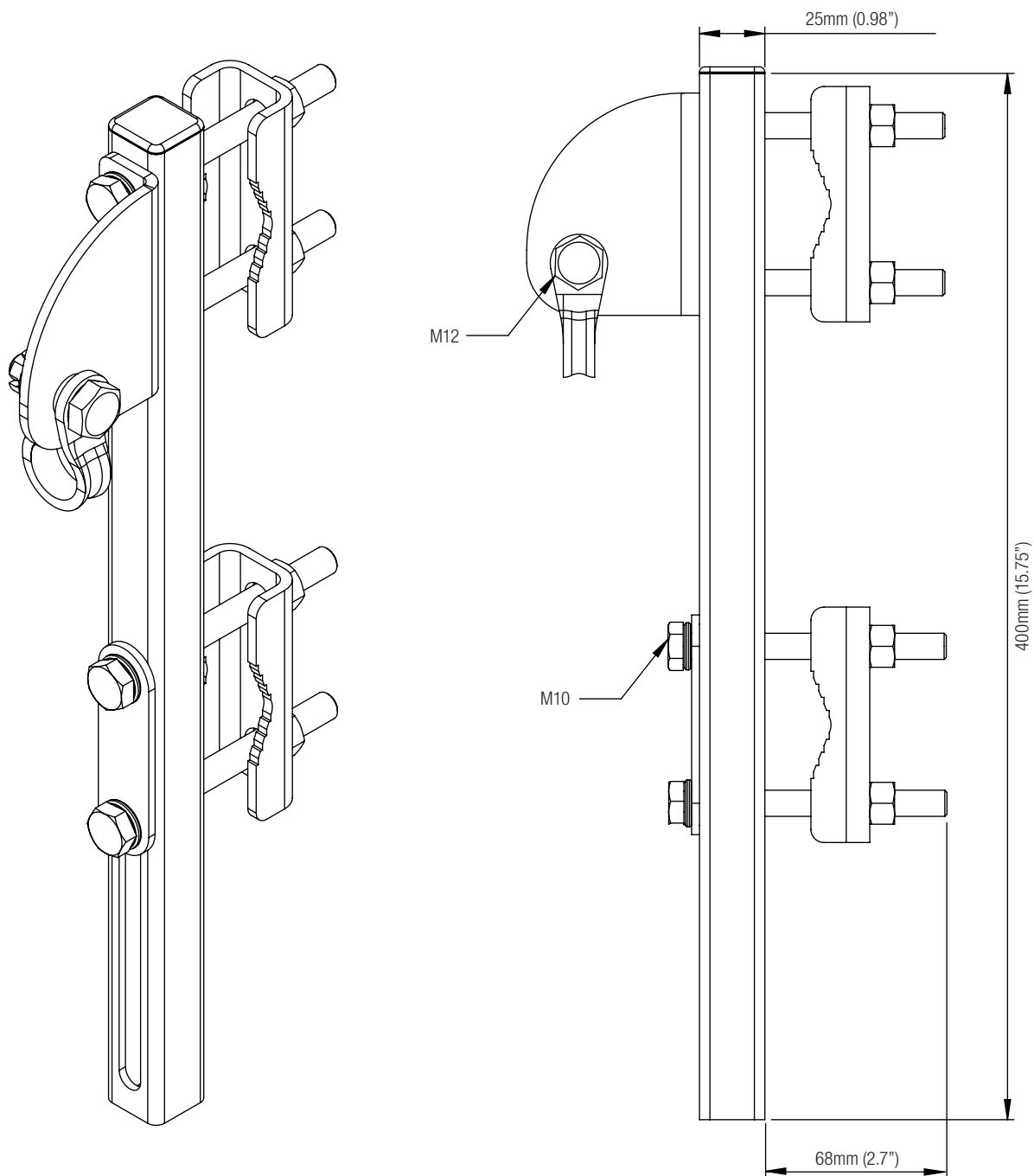
COMPONENT SPECIFICATION

MATERIAL	304 Stainless Steel
FINISH	Electropolished
WEIGHT	1.65 kg (3.6 lbs)
QUALITY	ISO 9001

Technical Datasheet No: 1238

Cabloc Galvanised Steel Top Anchor

Part No: 6191035



APPLICATION

Used as a top anchor on the Cabloc vertical system for ladders.

Compatibility: Rung centres 200mm-310mm (7.87"-12.20"). Fits cylindrical rung $\varnothing 12-\varnothing 30$ (0.47"-1.18") and square rungs 20mm-40mm (0.79"-1.57").

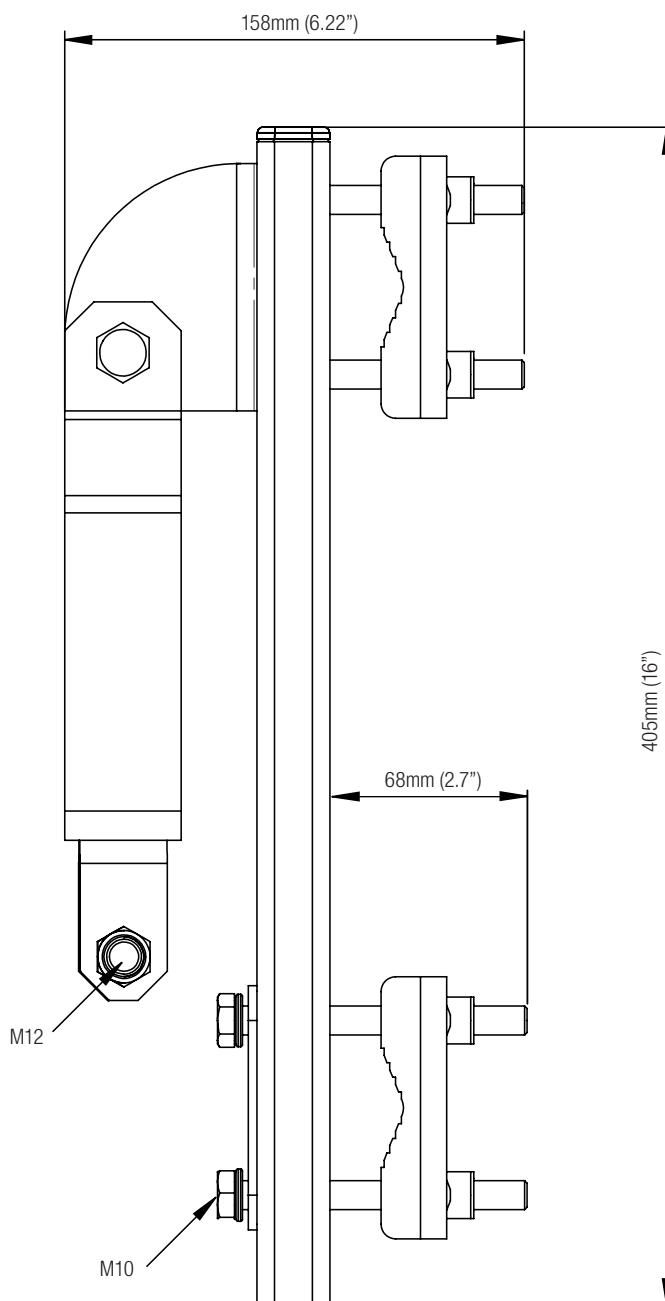
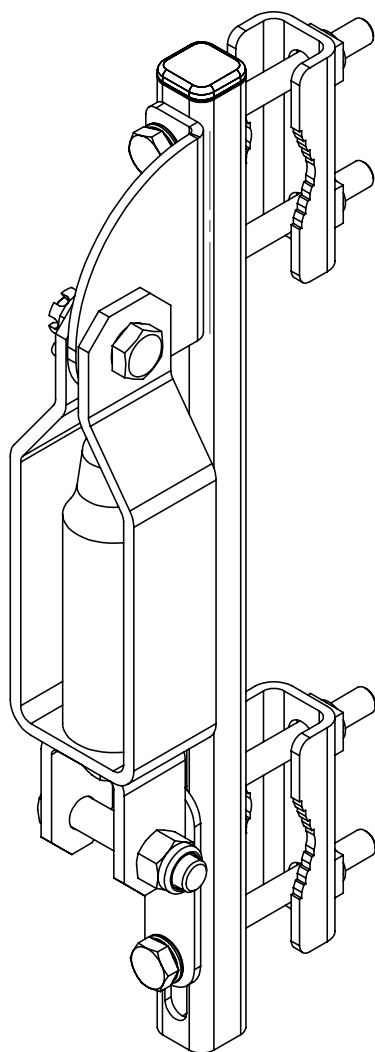
COMPONENT SPECIFICATION

MATERIAL	Steel
FINISH	Galvanised
WEIGHT	1.65 kg (3.6 lbs)
QUALITY	ISO 9001

Technical Datasheet No: 1336

Top Anchor with Shock Absorber

Part No: 6191063



APPLICATION

Used with Cabloc systems on standard ladders to provide a top anchor point with energy absorption. Rung centres 200mm-310mm (7.87" – 12.20"). Fits cylindrical rung $\varnothing 12\text{-}\varnothing 30$ (0.47"-1.18") and square rungs 20mm-40mm (0.79"-1.57"). The energy absorber limits the force back to the user and the structure (only one user per system permitted). MUST NOT be used in conjunction with any other energy absorber.

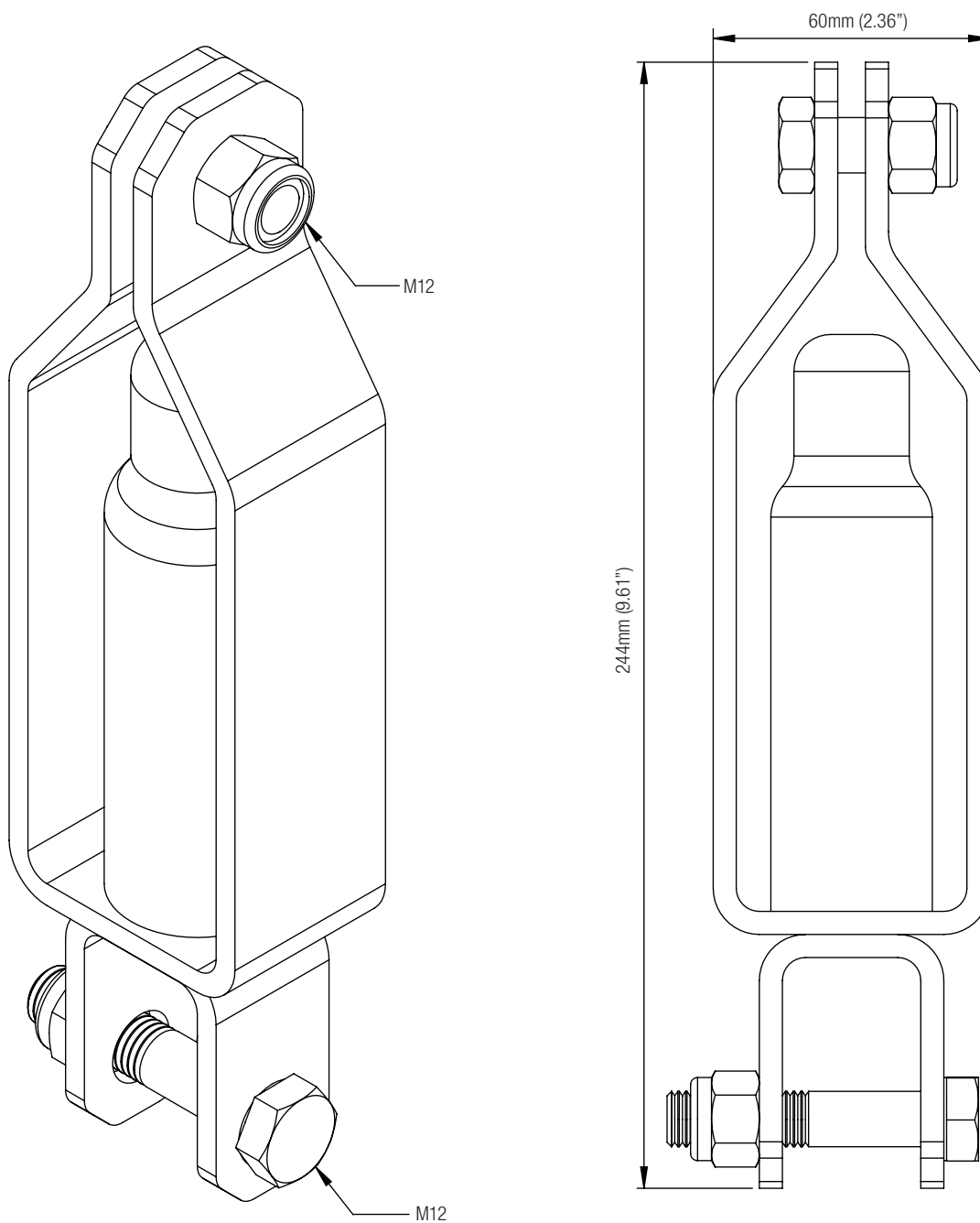
COMPONENT SPECIFICATION

MATERIAL	304 Stainless Steel / Galvanised Steel
FINISH	Electropolished
WEIGHT	2.6 kg (5.7 lbs)
QUALITY	ISO 9001

Technical Datasheet No: 1221

In-line Shock Absorber

Part No: AC325



APPLICATION

Used in conjunction with the top anchor on Cabloc vertical systems to absorb energy, limiting the force back to the user and the structure (only one user per system permitted).

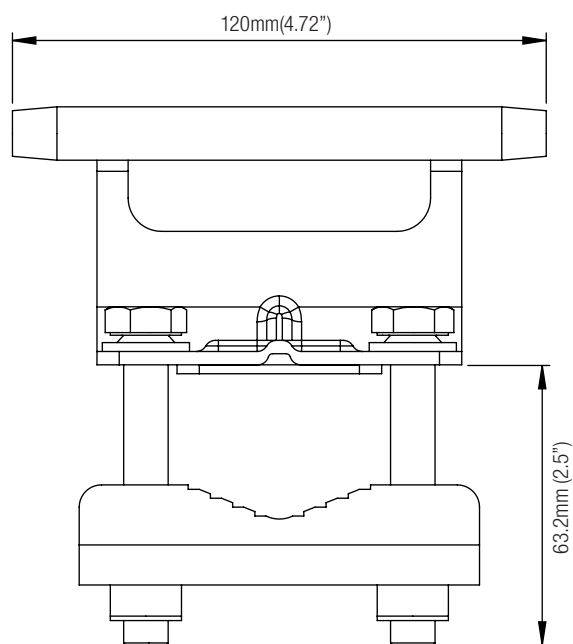
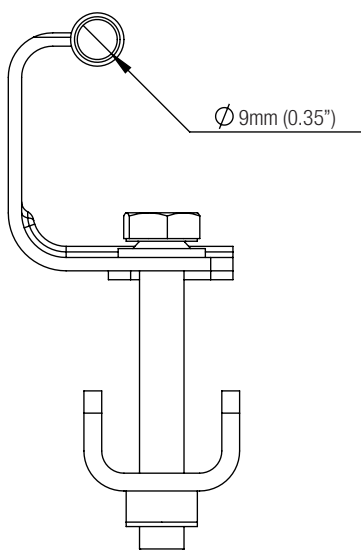
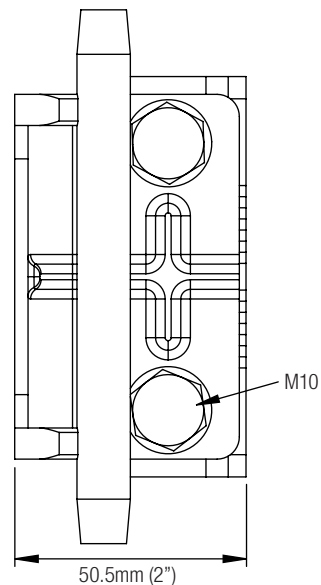
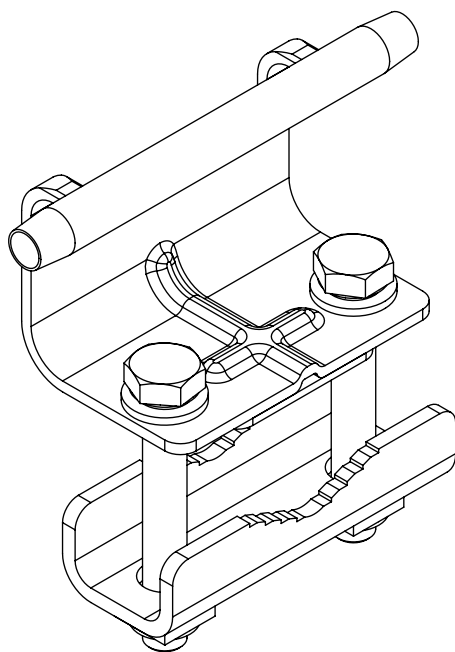
COMPONENT SPECIFICATION

MATERIAL	304 Stainless Steel
FINISH	Electropolished
WEIGHT	1.15 kg (2.5 lbs)
QUALITY	ISO 9001

Technical Datasheet No: 1224

Cabloc Pro Int Guide SS

Part No: 6191019



APPLICATION

The cable guide is designed to fix the cable to the ladder on one rung, whilst allowing easy passage of the traveller.

Rung shape and size: Round $\text{\O}12$ to $\text{\O}30\text{mm}$ (0.47" to 1.18") / Square 20 to 40mm (0.79" to 1.57").

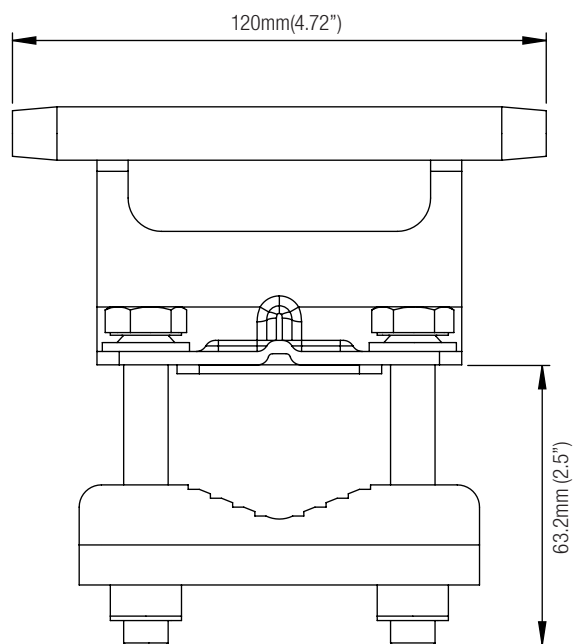
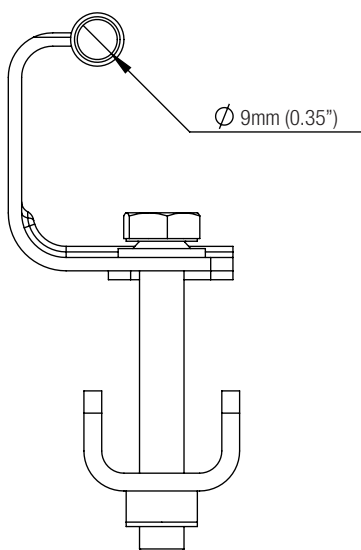
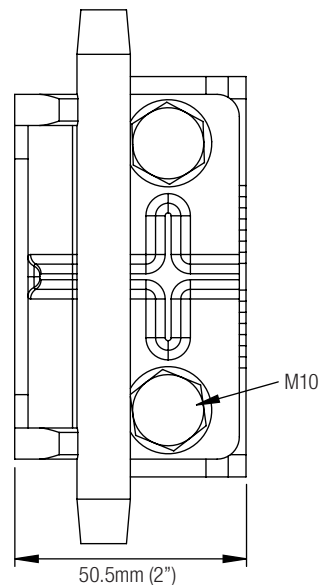
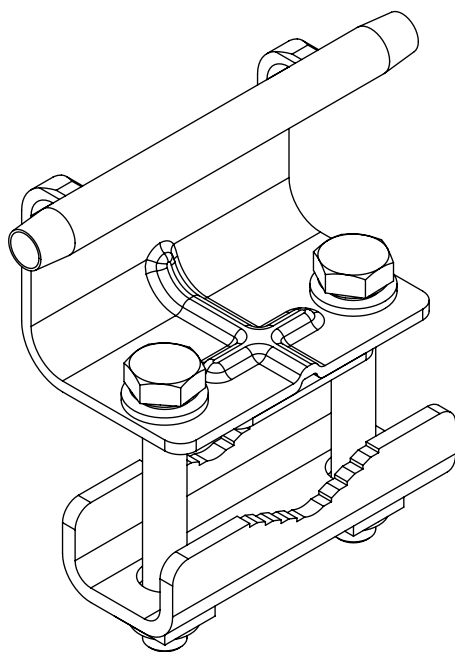
COMPONENT SPECIFICATION

MATERIAL	316 / 304 Stainless Steel
FINISH	Electropolished / Natural
WEIGHT	0.5 kg (1.1 lbs)
QUALITY	ISO 9001

Technical Datasheet No: 1122

Cabloc Pro Int Guide

Part No: 6191002



APPLICATION

The cable guide is designed to fix the cable to the ladder on one rung, whilst allowing easy passage of the traveller.

Rung shape and size: Round Ø12 to Ø30mm (0.47" to 1.18") / Square 20 to 40mm (0.79" to 1.57").

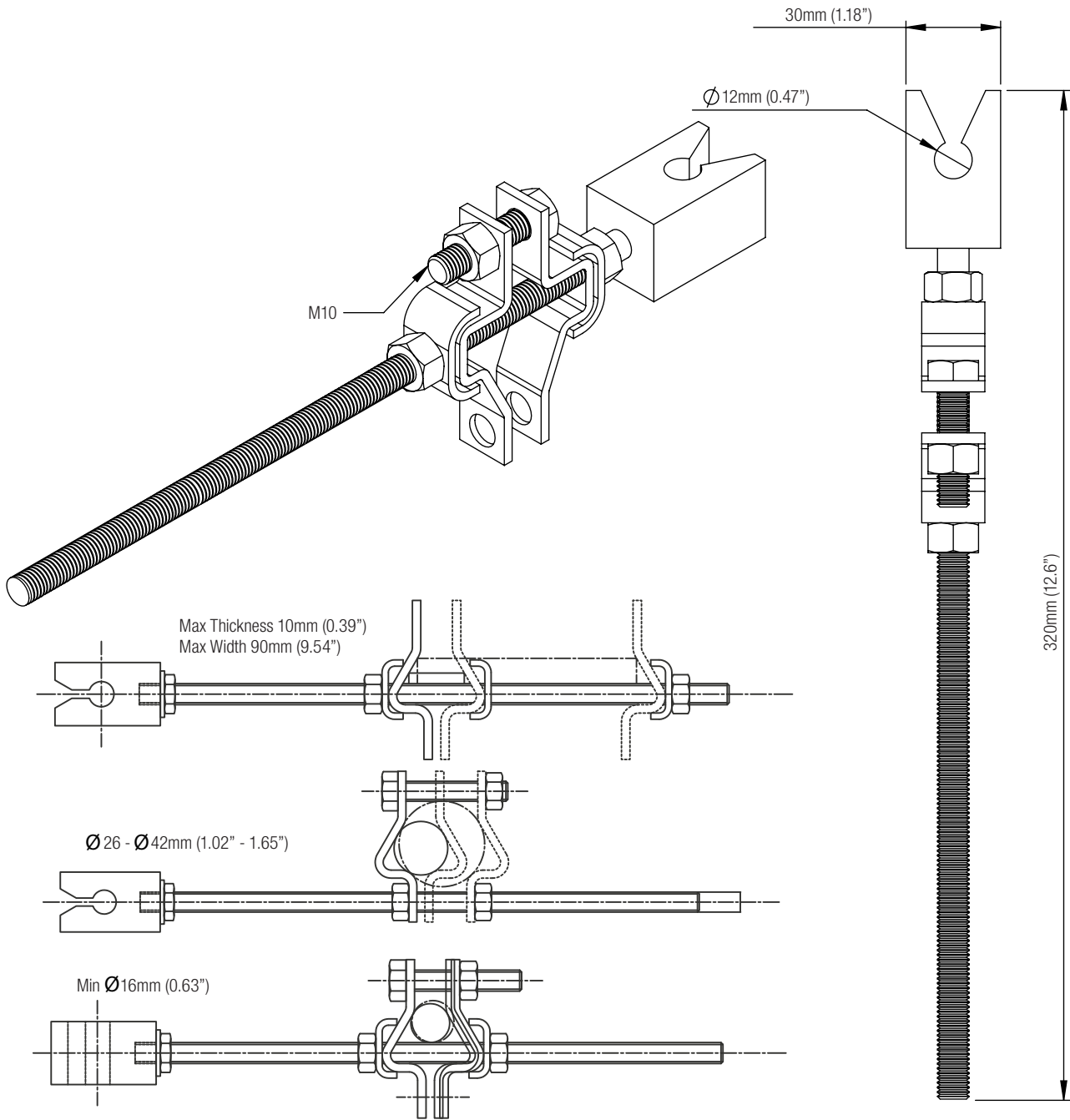
COMPONENT SPECIFICATION

MATERIAL	316 Stainless Steel / Steel
FINISH	Electropolished / Galvanised
WEIGHT	0.5 kg (1.1 lbs)
QUALITY	ISO 9001

Technical Datasheet No: 1222

Cable Guide

Part No: AC320



APPLICATION

Used to guide the cable in vertical systems.

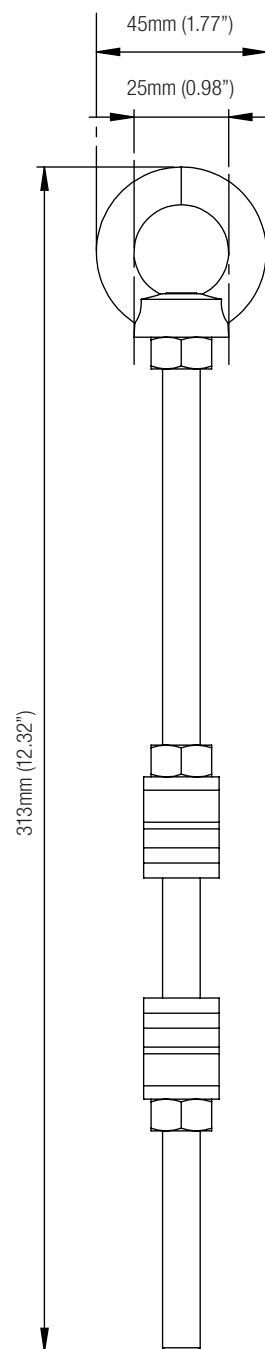
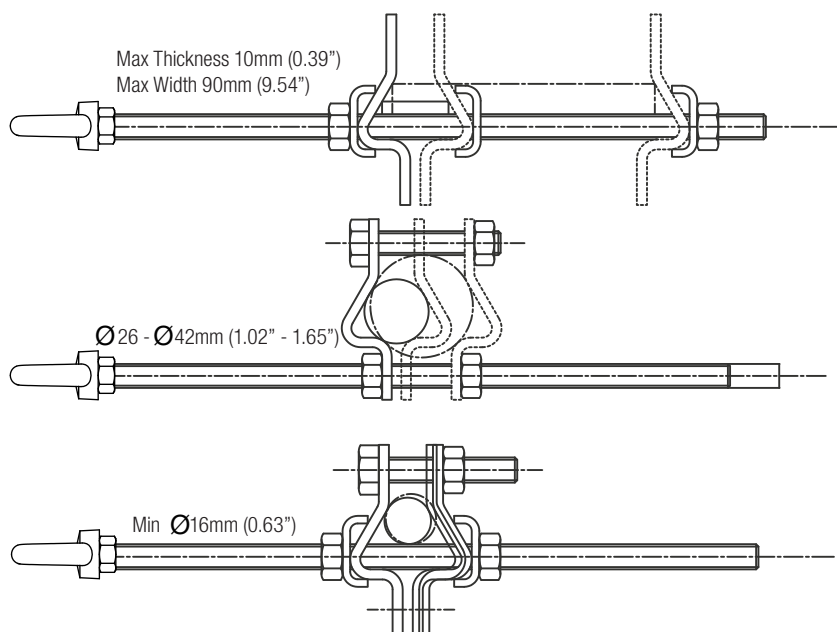
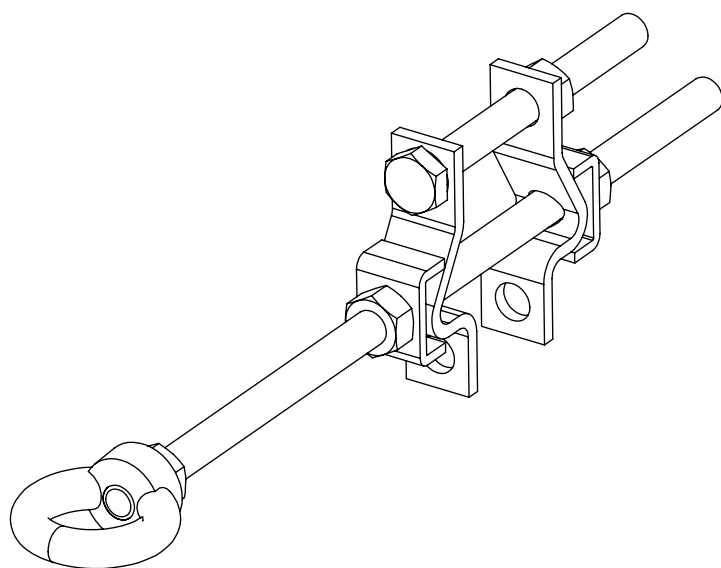
COMPONENT SPECIFICATION

MATERIAL	304 Stainless Steel
FINISH	Electropolished
WEIGHT	0.44 kg (0.97 lbs)
QUALITY	ISO 9001

Technical Datasheet No: 1334

Counterweight Guide

Part No: AC320/3



APPLICATION

Used in conjunction with the Counterweight to guide the cable in vertical systems.

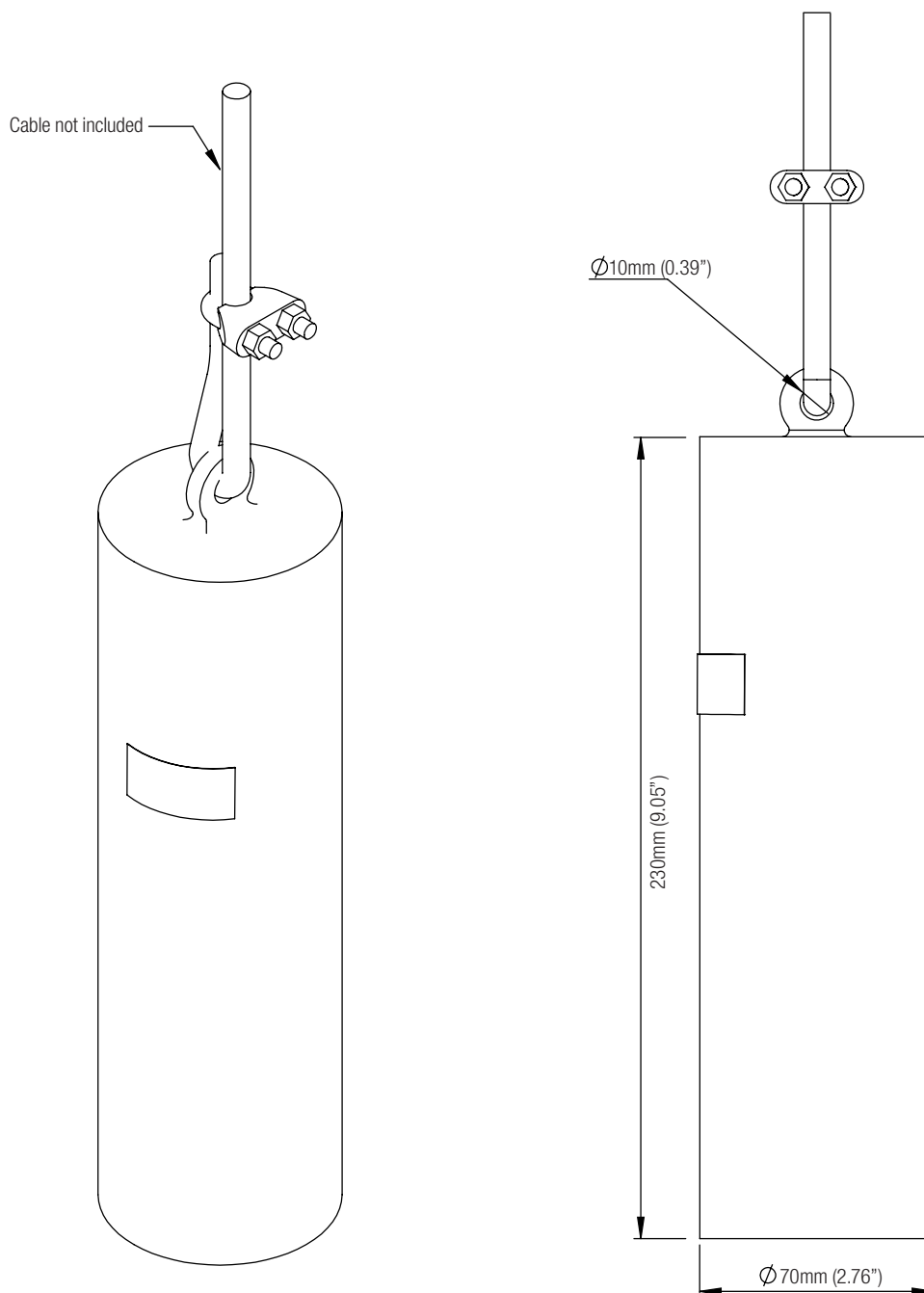
COMPONENT SPECIFICATION

MATERIAL	304 Stainless Steel
FINISH	Electropolished
WEIGHT	0.44 kg (0.97 lbs)
QUALITY	ISO 9001

Technical Datasheet No: 1335

Counterweight

Part No: AC323



APPLICATION

Used at the bottom of a vertical system working in conjunction with the Counterweight Guide. The weight pulls the cable taught enough to allow use of the system.

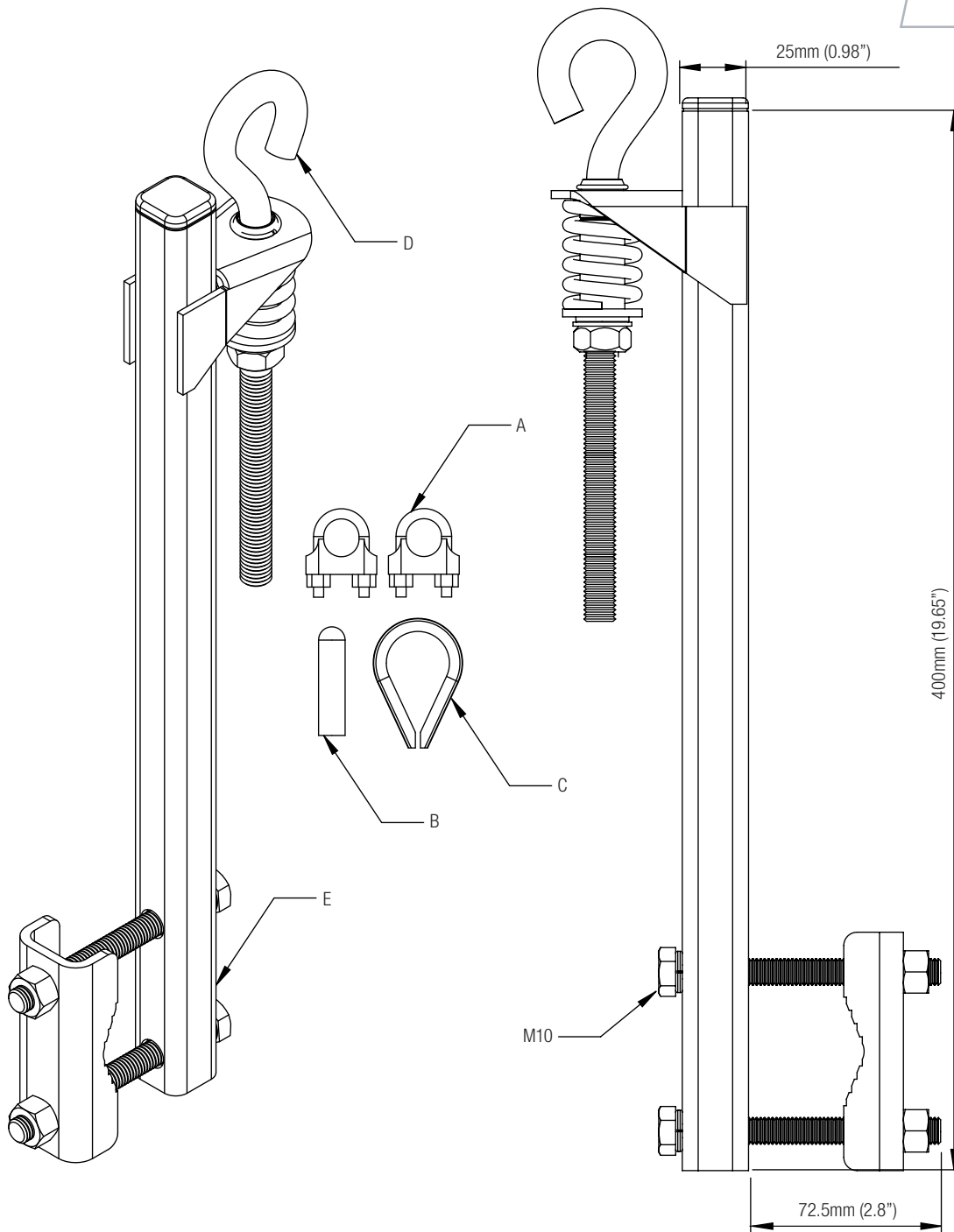
COMPONENT SPECIFICATION

MATERIAL	Galvanised Steel
FINISH	Electropolished
WEIGHT	7.02 kg (15.5 lbs)
QUALITY	ISO 9001

Technical Datasheet No: 1223

Cabloc Stainless Steel Bottom Anchor

Part No: 6191033



A	Cable Clamp
B	Cable End Cap
C	Thimble
D	Attachment Ring
E	Bottom Anchor

APPLICATION

Used at the bottom of Cabloc systems utilising 6x19 and 7x19 stainless steel cable (sold separately) to set the tension.

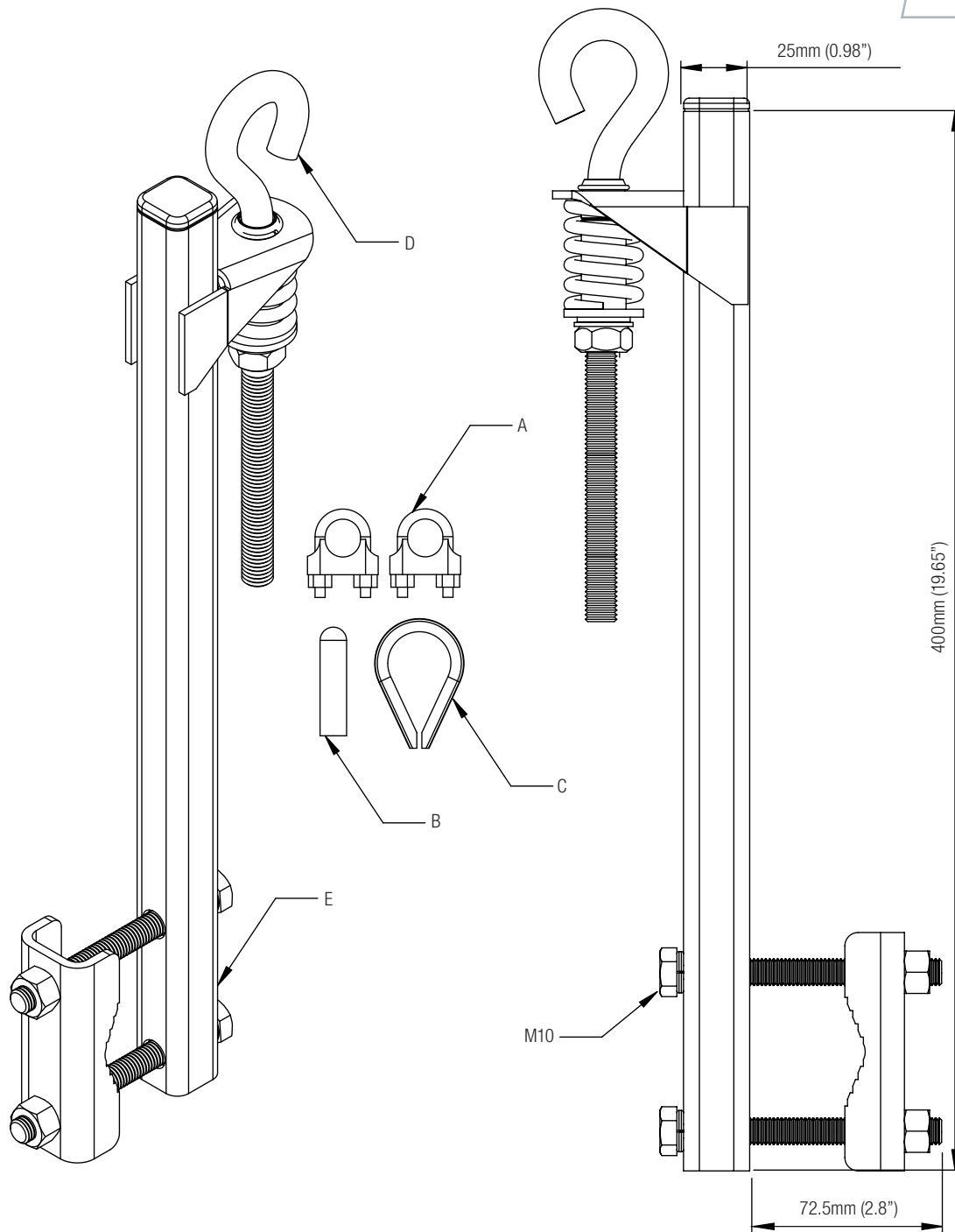
COMPONENT SPECIFICATION

MATERIAL	Stainless Steel
FINISH	Electropolished
WEIGHT	1.7 kg (3.7 lbs)
QUALITY	ISO 9001

Technical Datasheet No: 1237

Cabloc Galvanised Steel Bottom Anchor

Part No: 6191036



A	Cable Clamp
B	Cable End Cap
C	Thimble
D	Attachment Ring
E	Bottom Anchor

APPLICATION

Used at the bottom of Cabloc systems utilising 6x19 and 7x19 stainless steel cable (sold separately) to set the tension.

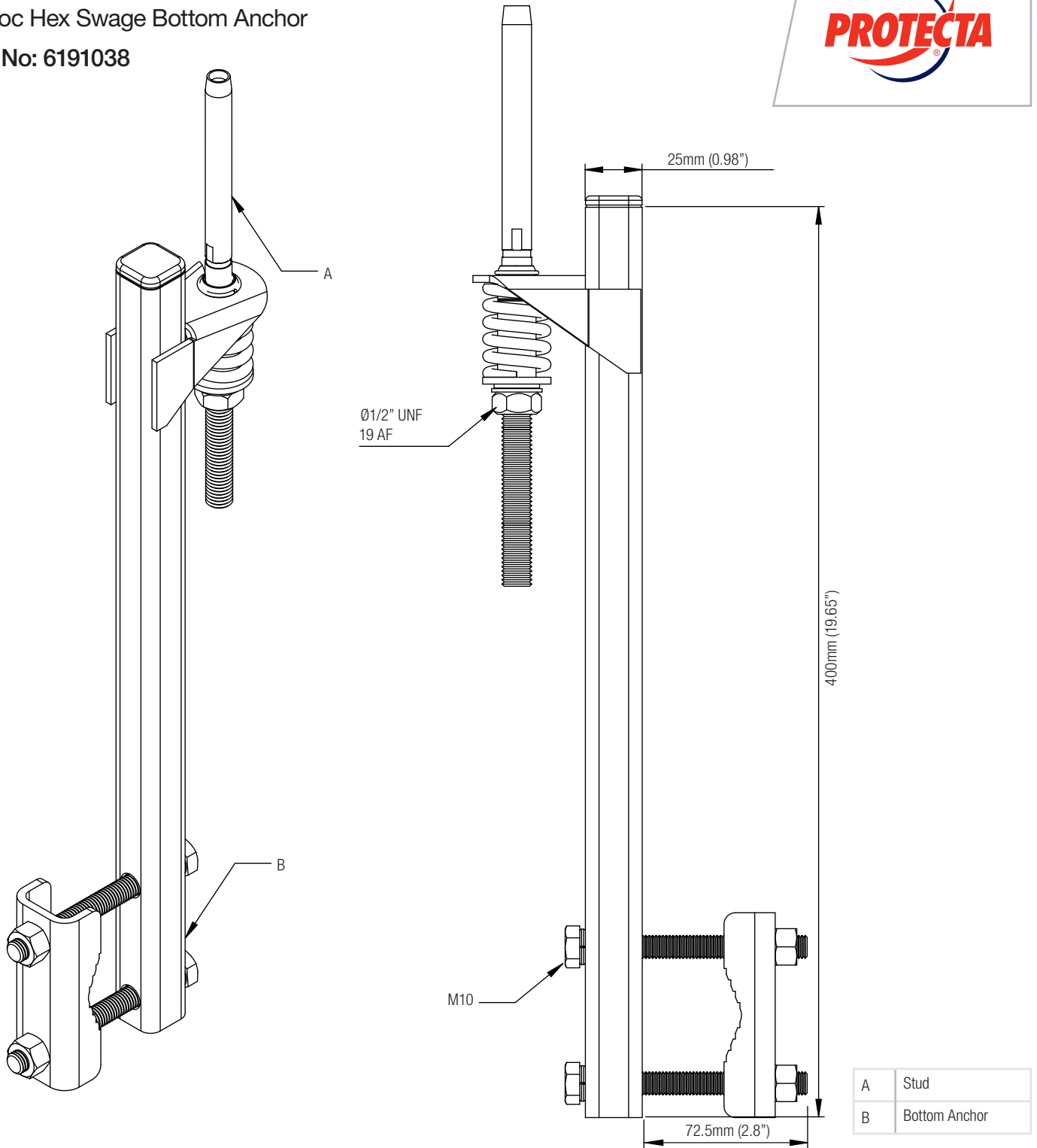
COMPONENT SPECIFICATION

MATERIAL	Steel
FINISH	Galvanised
WEIGHT	1.7 kg (3.7 lbs)
QUALITY	ISO 9001

Technical Datasheet No: 1128

Cabloc Hex Swage Bottom Anchor

Part No: 6191038



APPLICATION

Used at the bottom of Cabloc systems utilising 1x19 stainless steel cable (sold separately) to set the tension.

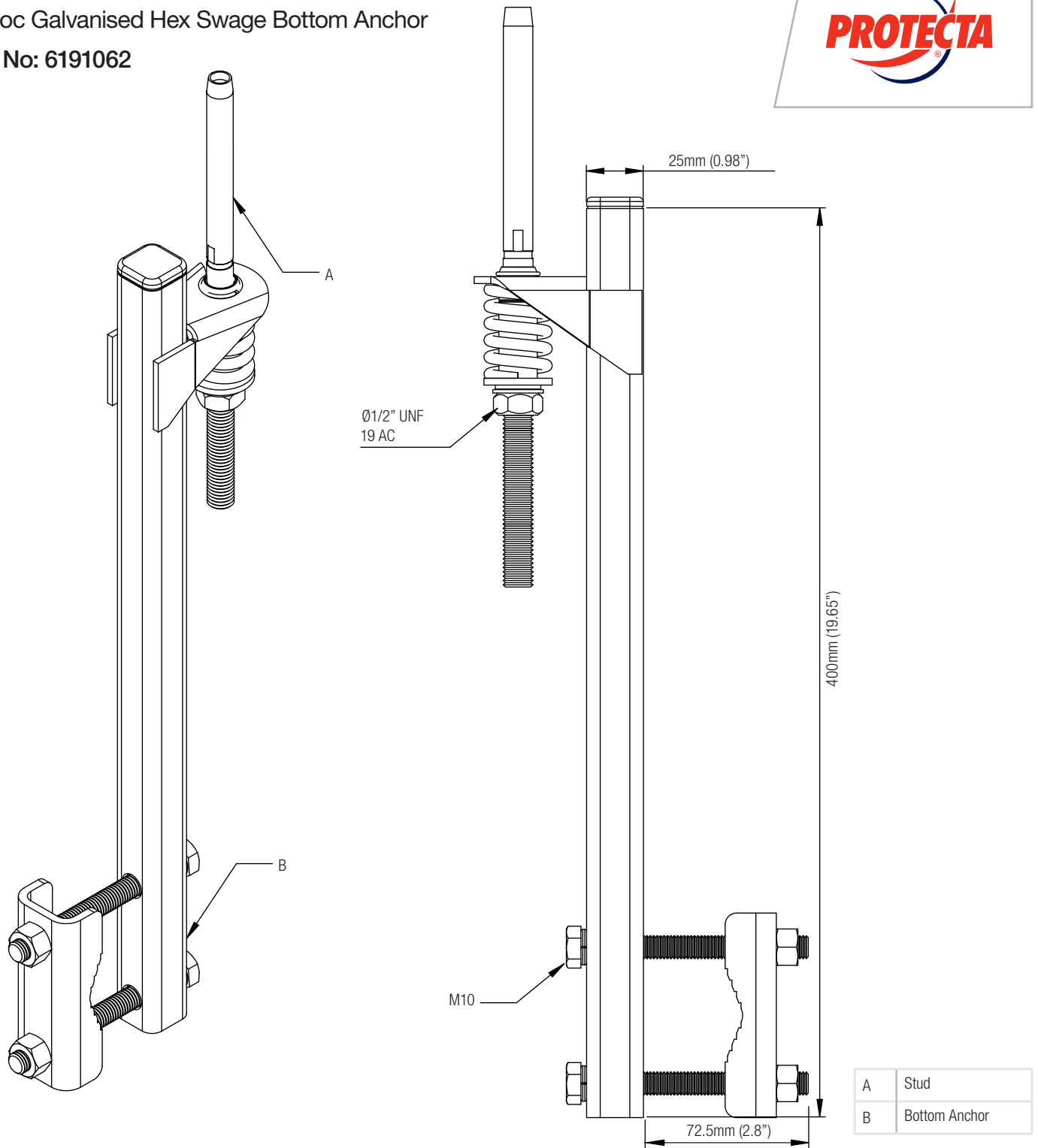
COMPONENT SPECIFICATION

MATERIAL	316 / 304 Stainless Steel
FINISH	Electropolished / Machined
WEIGHT	1.5 kg (3.3 lbs)
QUALITY	ISO 9001

Technical Datasheet No: 1329

Cabloc Galvanised Hex Swage Bottom Anchor

Part No: 6191062



APPLICATION

Used at the bottom of Cabloc systems utilising 1x19 stainless steel cable (sold separately) to set the tension.

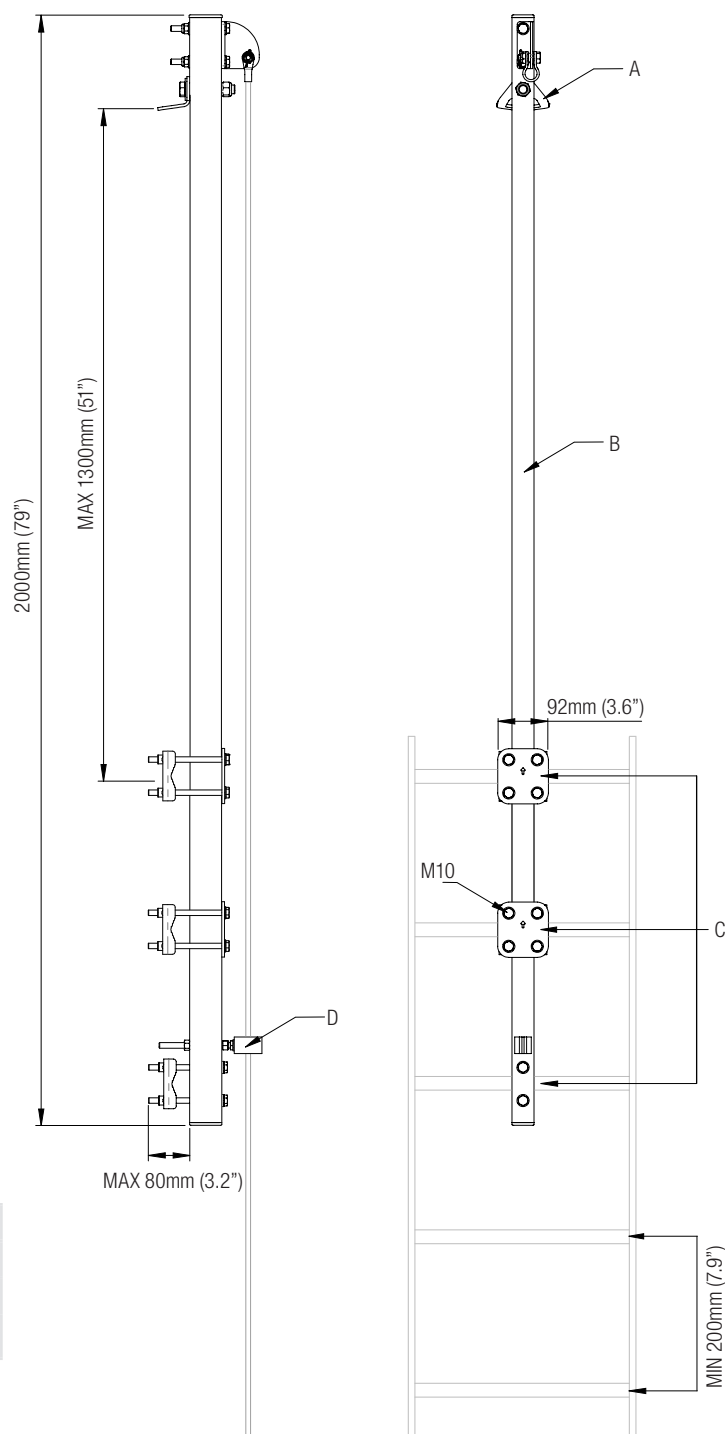
COMPONENT SPECIFICATION

MATERIAL	316 / Galvanised Stainless Steel
FINISH	Electropolished / Machined
WEIGHT	1.6 kg (3.5 lbs)
QUALITY	ISO 9001

Technical Datasheet No: 1359

Ladder Extension Bracket - Galvanised

Part No: 6180174



A	Single Point Anchor
B	Rigid Mast
C	Bracket Assemblies
D	Cable Guide

All components shown are included

APPLICATION

To extend the Cabloc system up to 1.3m (51") beyond a finishing platform. Additional feature (A) serves as a single point anchor. Minimum strength of structure 12kN. Maximum users 1. The minimum rung space required is 200mm (7.9"). The rung shape and size range is: Round Ø12-30mm (0.5"-1.2") / Square 20-40mm (0.8-1.8"). Conforms to EN 795:2012 Type A

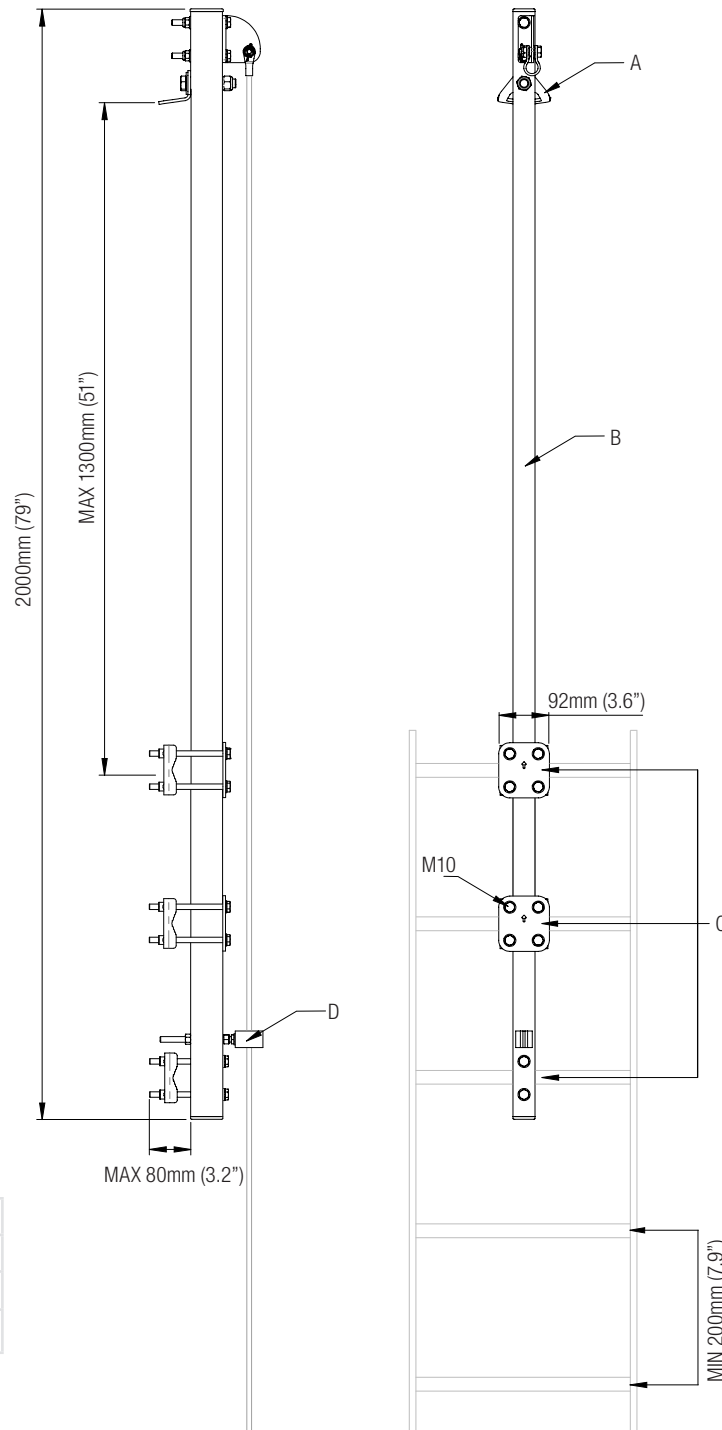
COMPONENT SPECIFICATION

MATERIAL	Mild Steel
FINISH	Galvanised
WEIGHT	10.5kg (23 lbs)
QUALITY	ISO 9001

Technical Datasheet No: 1360

Ladder Extension Bracket - Stainless Steel

Part No: 6180175



A	Single Point Anchor
B	Rigid Mast
C	Bracket Assemblies
D	Cable Guide

All components shown are included

APPLICATION

To extend the Cabloc system up to 1.3m (51") beyond a finishing platform. Additional feature (A) serves as a single point anchor. Minimum strength of structure 12kN. Maximum users 1. The minimum rung space required is 200mm (7.9"). The rung shape and size range is: Round Ø12-30mm (0.5"-1.2") / Square 20-40mm (0.8-1.8"). Conforms to EN 795:2012 Type A

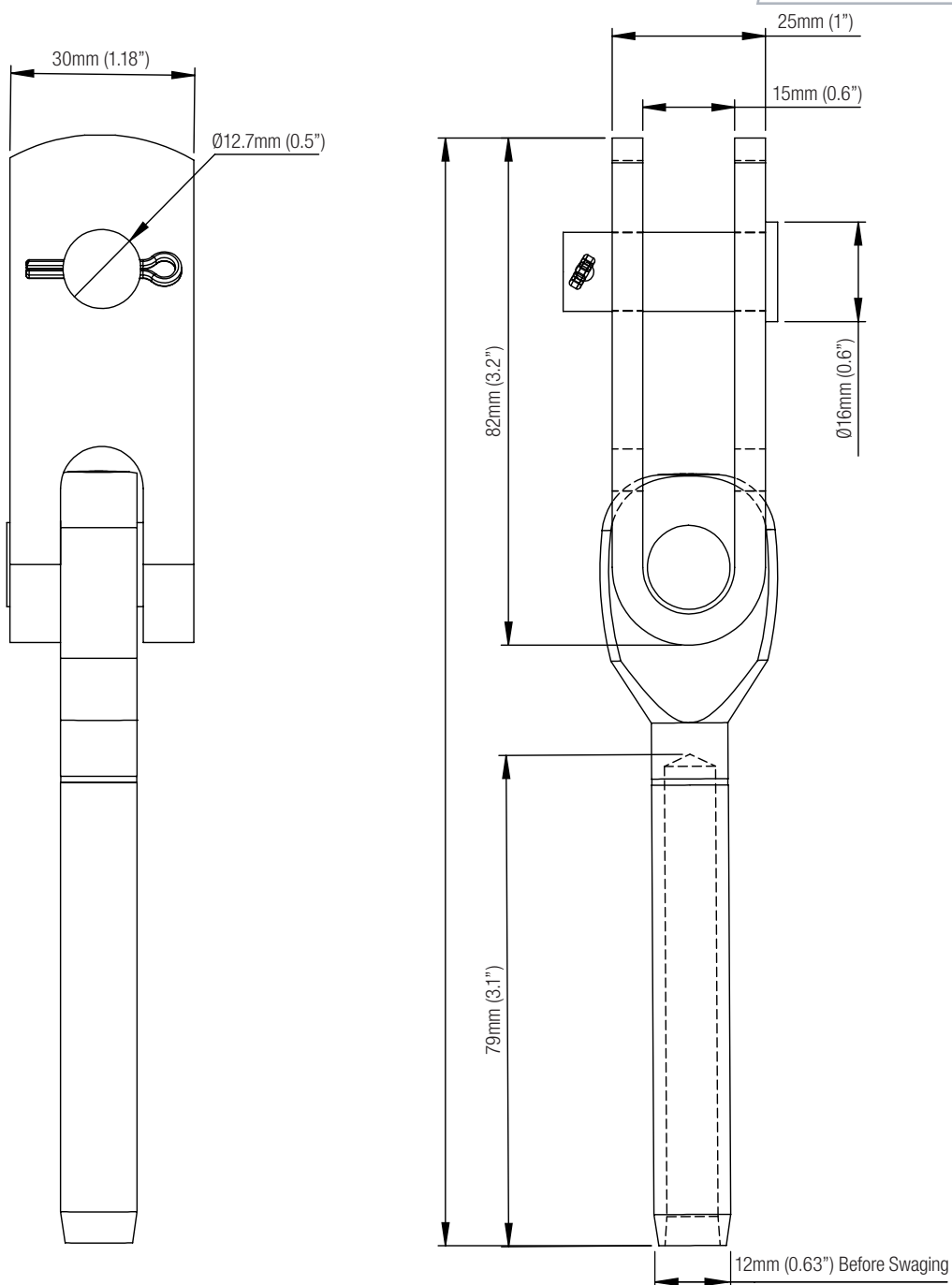
COMPONENT SPECIFICATION

MATERIAL	304L Stainless Steel
FINISH	Natural
WEIGHT	11.5kg (26 lbs)
QUALITY	ISO 9001

Technical Datasheet No: 0906

8mm Hex Swage Toggle

Part No: 7234011



APPLICATION

For use with 8mm 1x19 or 7x7 wire only. Refer to installation instructions for information on assembly and installation. 19kN max permitted arrest load, min break strength 38kN.

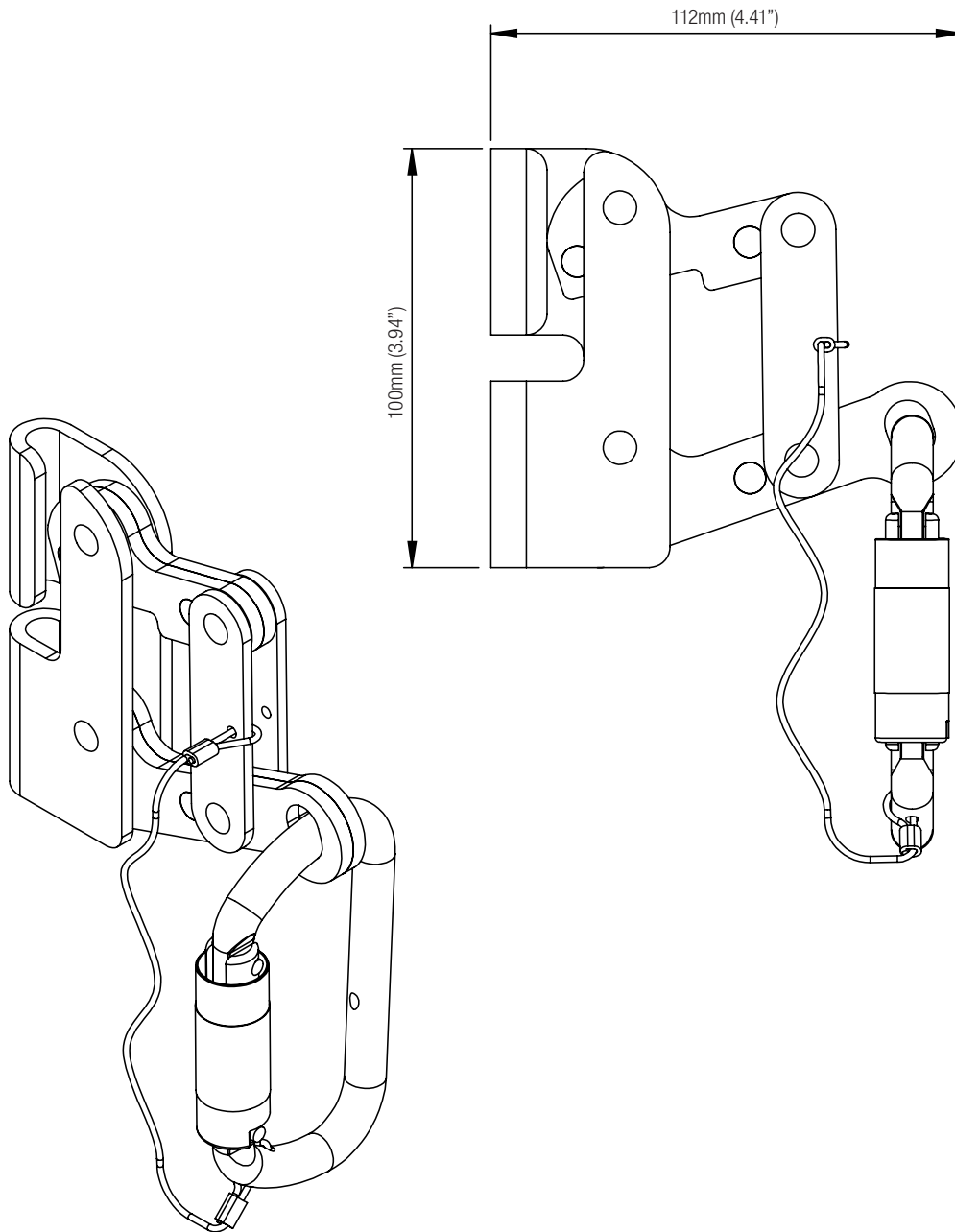
COMPONENT SPECIFICATION

MATERIAL	316 Stainless Steel
FINISH	Natural
WEIGHT	0.35 kg (0.78 lbs)
QUALITY	ISO 9001

Technical Datasheet No: 1225

Cabloc Traveller

Part No: AC350



APPLICATION

Used as a traveller in vertical systems, allowing the user to move freely up and down the system whilst maintaining attachment.

For use on 8mm galvanised or stainless steel cable. Breaking strength > 15kN (3372lbf). User weight 50kg - 136kg (110lbs - 300lbs).

Note: System MUST contain an In-line Energy Absorber. Only use with the karabiner supplied. Read user manual before use.

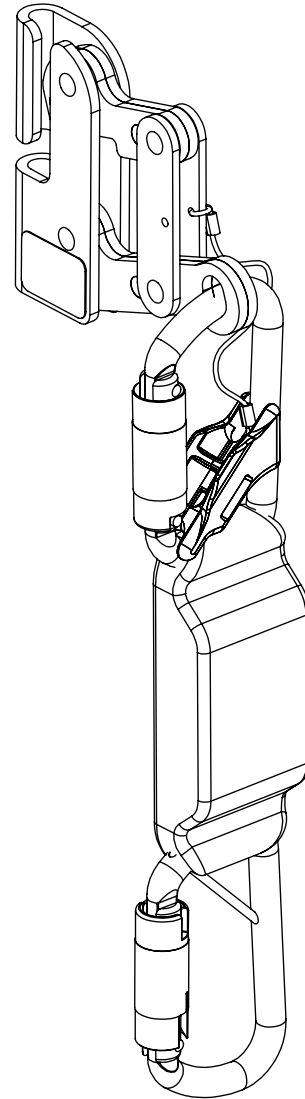
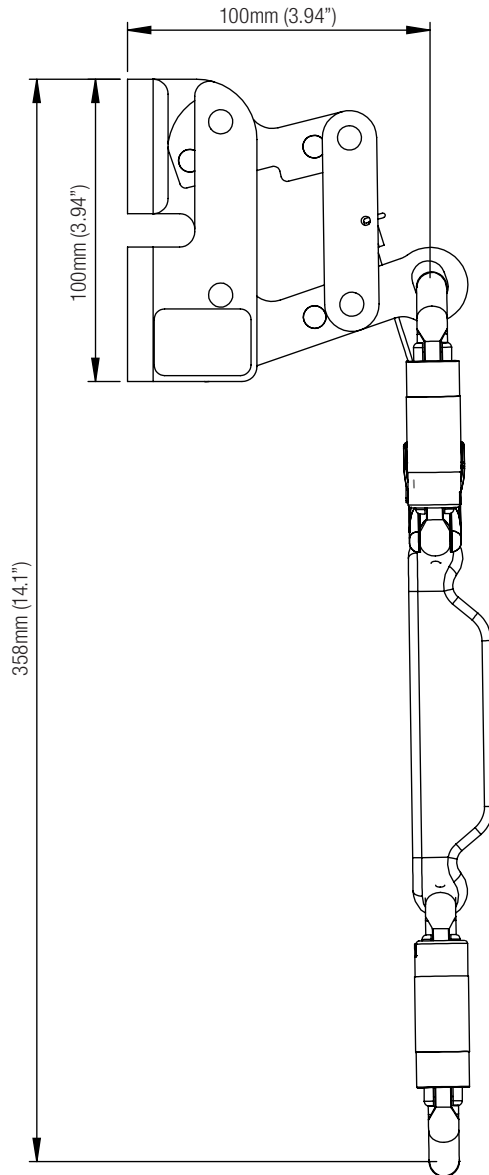
COMPONENT SPECIFICATION

MATERIAL	304 Stainless Steel
FINISH	Electropolished
WEIGHT	0.65 kg (1.43 lbs)
QUALITY	ISO 9001

Technical Datasheet No: 1234

Cabloc Traveller with Energy Absorber

Part No: AC350/4



APPLICATION

Used as a traveller in vertical systems, allowing the user to move freely up and down the system whilst maintaining attachment. Includes energy absorbing element. Only use with the carabiner and shock absorber supplied. For use on 8mm stainless steel cable. Breaking strength > 15kN (3372lbf). User weight 50kg - 136kg (110lbs - 300lbs). Note: System MUST NOT contain an In-line Energy Absorber. Read user manual before use.

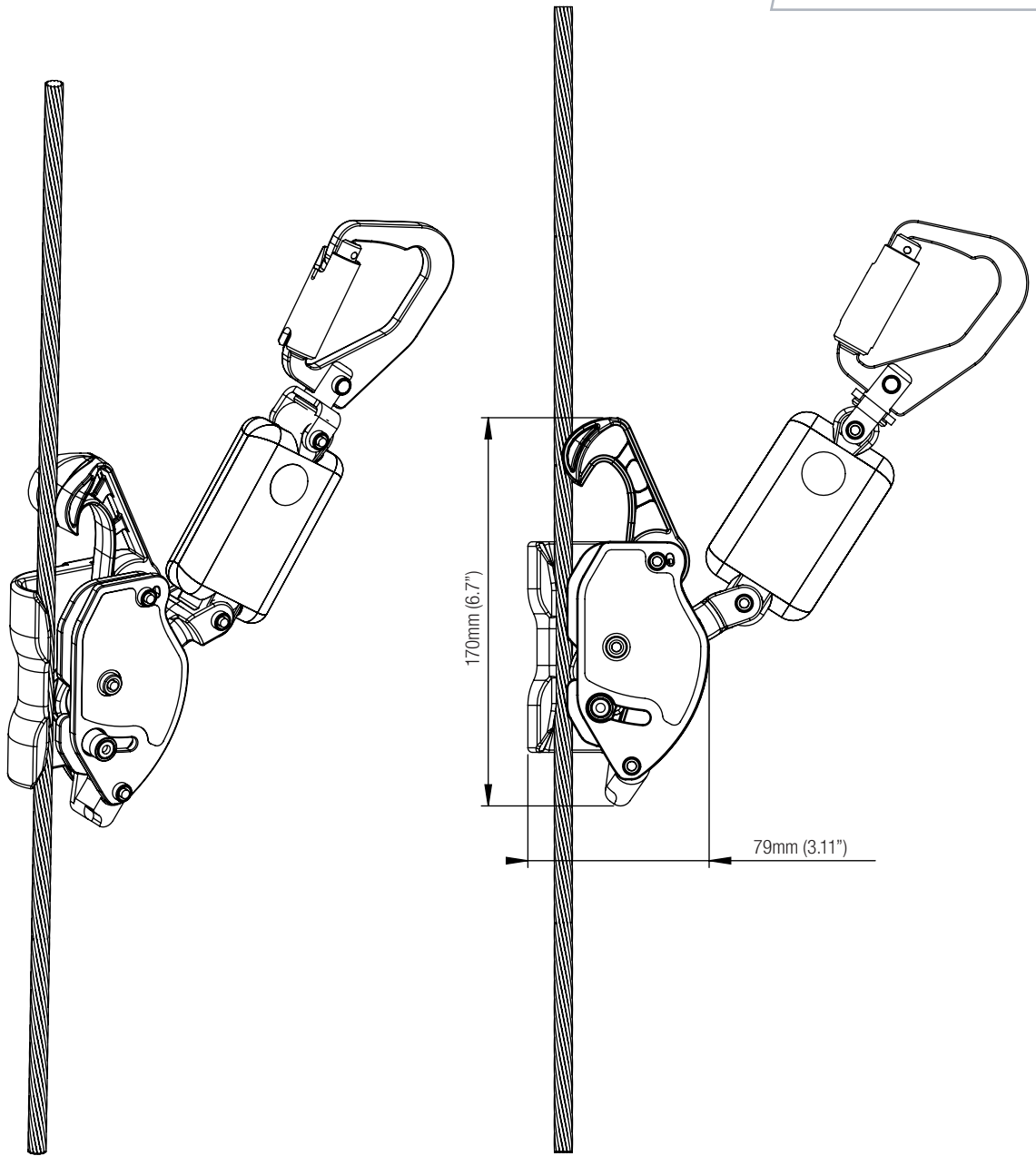
COMPONENT SPECIFICATION

MATERIAL	304 Stainless Steel
FINISH	Electropolished
WEIGHT	0.91 kg (2 lbs)
QUALITY	ISO 9001

Technical Datasheet No: 0966

Cabloc Pro

Part No: 6199998



APPLICATION

Used as a traveller in vertical applications to allow the user to be constantly attached to the system.

Note: Cable not included. Use with 8mm 1x19 cable only. User weight 50kg-150kg (110lbs - 330lbs).

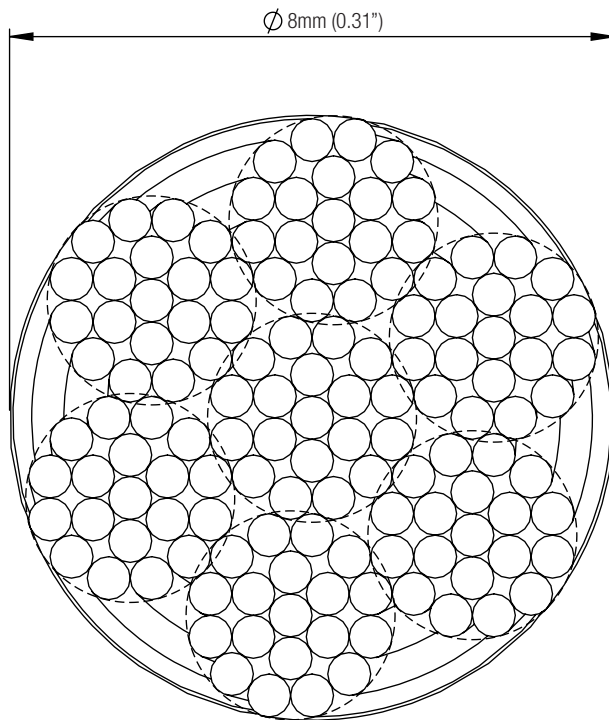
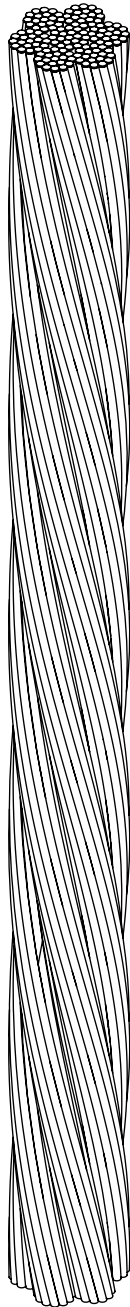
COMPONENT SPECIFICATION

MATERIAL	Nylon / Cast Stainless Steel / 1900dN Polyester
FINISH	Electropolished / Natural
WEIGHT	0.99 kg (2.2 lbs)
QUALITY	ISO 9001

Technical Datasheet No: 1233

8mm 7x19 Stainless Steel Cable By Length

Part No: AC300SXX



APPLICATION

8mm 7x19 Stainless Steel Cable is used as the basis of vertical climbing systems to allow continued attachment.

Minimum breaking strength 36.5kN (8,206lbf). Supplied with a loop and crimped at the end.

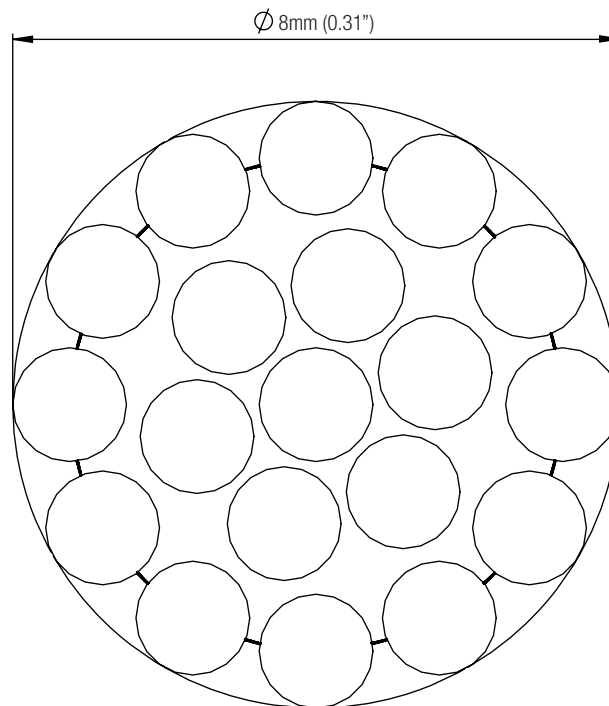
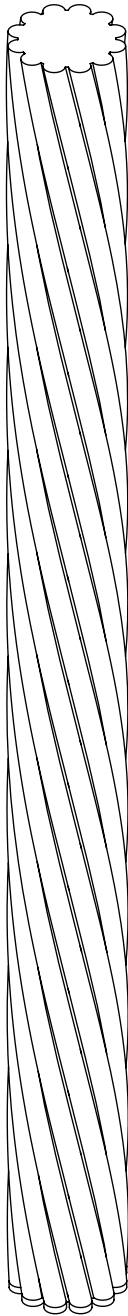
COMPONENT SPECIFICATION

MATERIAL	316 Stainless Steel
FINISH	Natural
WEIGHT	0.24kg/m (0.16lbs/ft)
QUALITY	ISO 9001

Technical Datasheet No: 0925

8mm 1x19 Stainless Steel Cable Per M

Part No: 7241072



APPLICATION

8mm 1x19 Stainless Steel Cable for use on vertical and Uni-8 Overhead systems. To be used with hex swage stud, toggle or tensioner only.

Minimum breaking strength 45.5kN (10,229lbf).

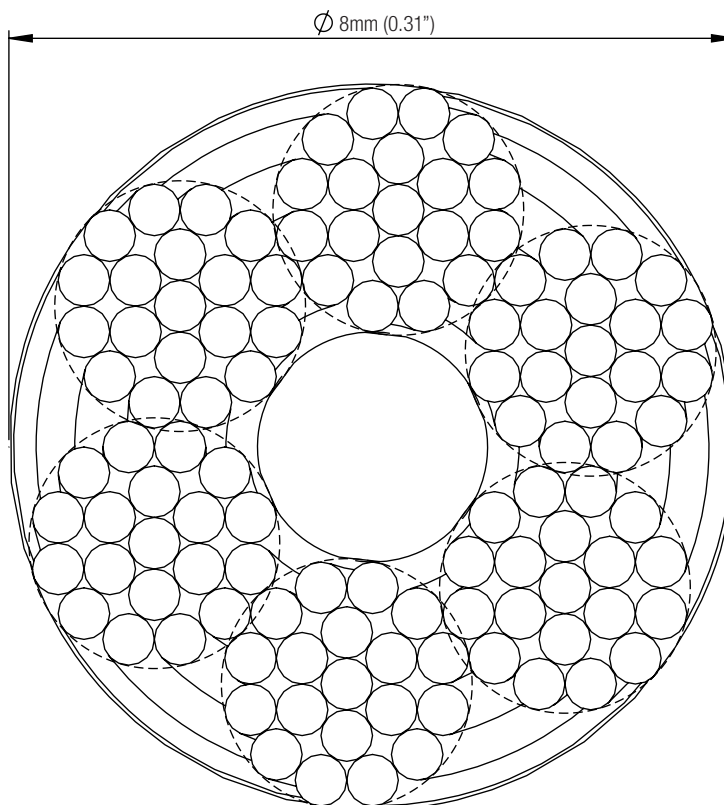
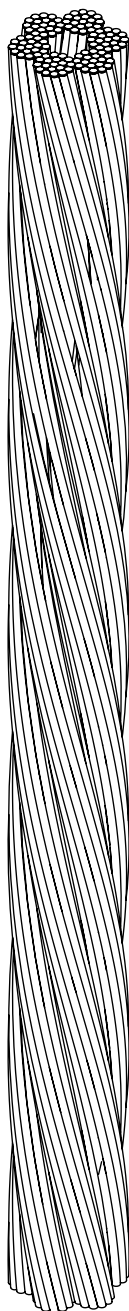
COMPONENT SPECIFICATION

MATERIAL	316 Stainless Steel
FINISH	Natural
WEIGHT	0.32kg/m (0.2lbs/ft)
QUALITY	ISO 9001

Technical Datasheet No: 1239

8mm 6x19 Galvanised Steel Cable By Length

Part No: AC300GXX



APPLICATION

8mm 6x19 Galvanised Steel Cable for use in Cabloc vertical systems. Minimum breaking strength 34.8kN (7,823lbf). Supplied with a loop and crimped at the end.

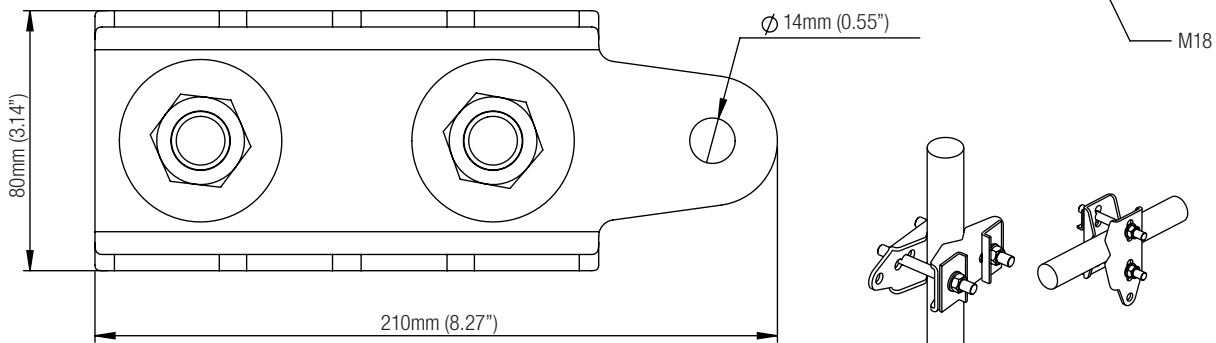
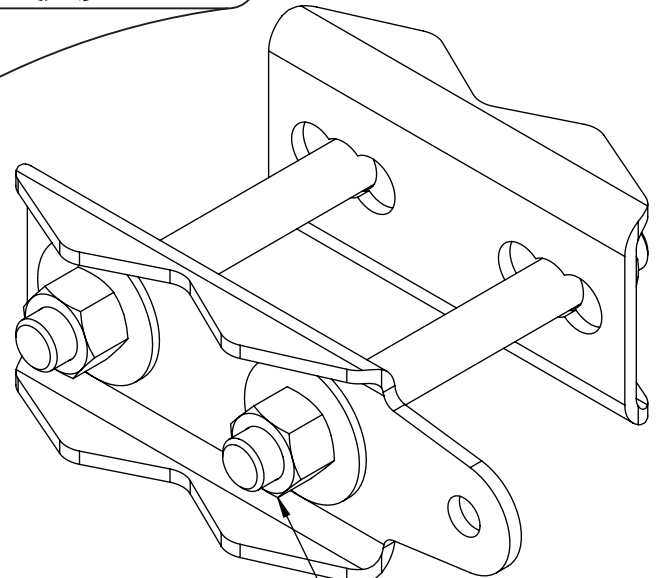
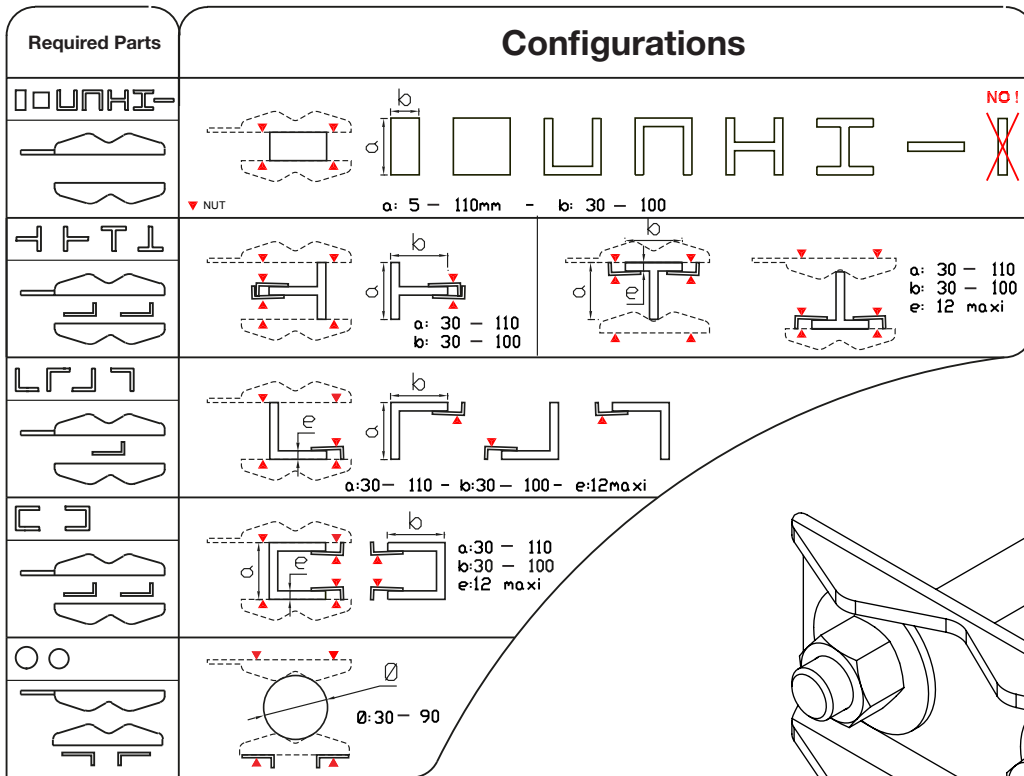
COMPONENT SPECIFICATION

MATERIAL	Steel
FINISH	Galvanised
WEIGHT	0.24kg/m (0.16lbs/ft)
QUALITY	ISO 9001

Technical Datasheet No: 1227

Universal End Anchorage Plate

Part No: AC340



COMPATIBLE SUPPORT SECTIONS



APPLICATION

Used to attach vertical systems to various structures.

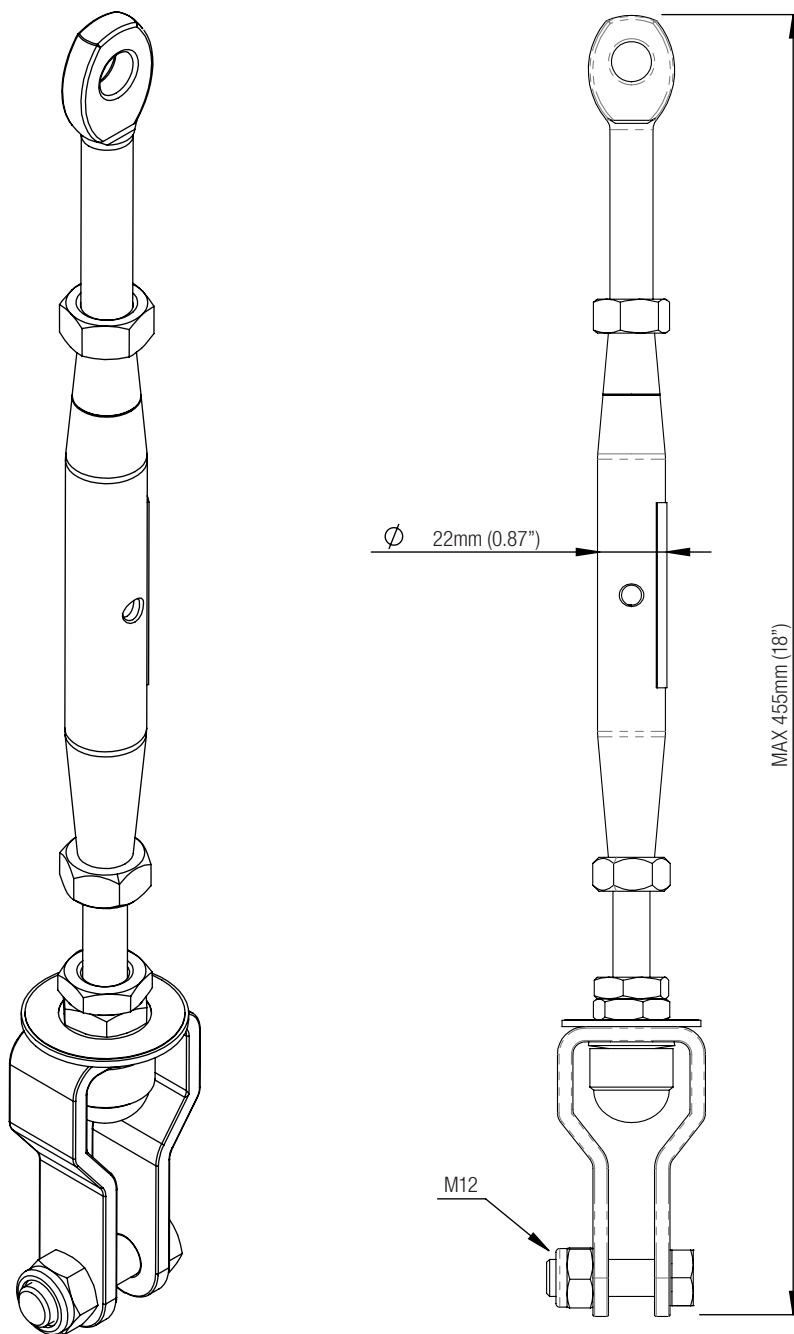
COMPONENT SPECIFICATION

MATERIAL	316L Stainless Steel
FINISH	Satin Polishing
WEIGHT	2.38 kg (5.2 lbs)
QUALITY	ISO 9001

Technical Datasheet No: 1228

Tensioner with Tension Indicator - Clevis / Eye

Part No: AC330



APPLICATION

Used in conjunction with bottom anchor in vertical systems to set the cable tension.

Operating pre-tension: 0.8kN (180lbf)

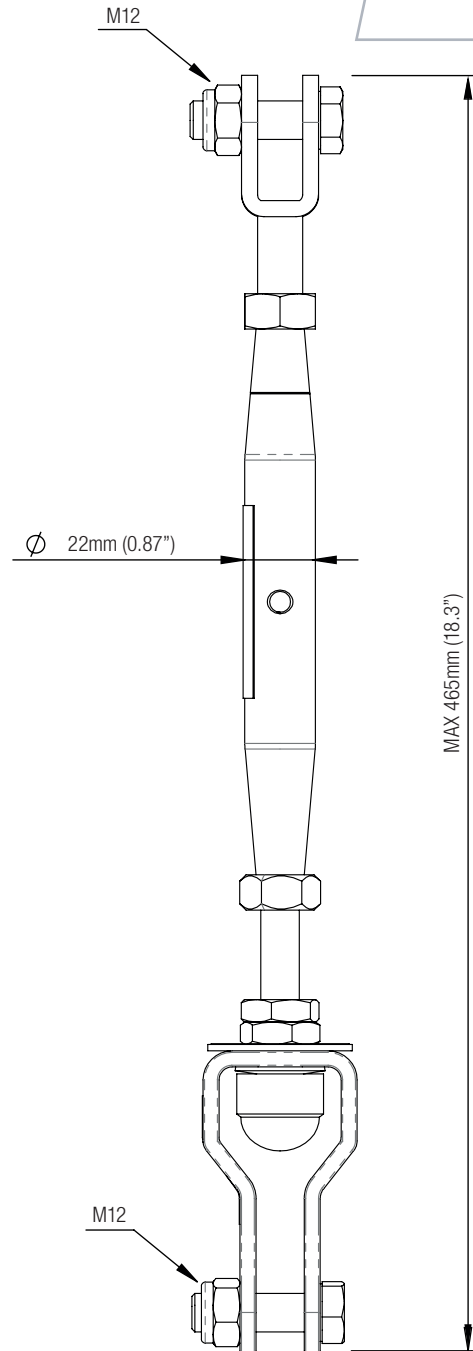
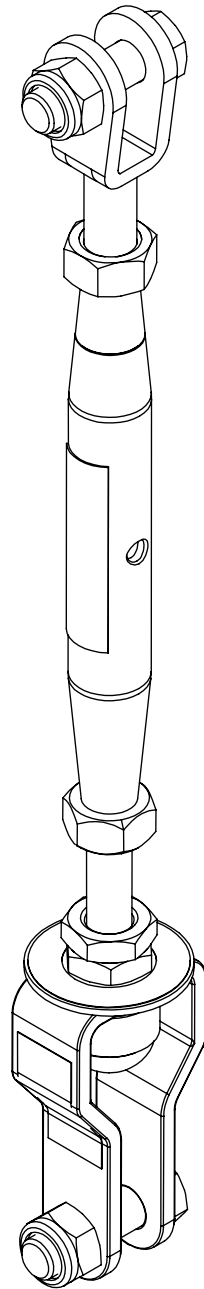
COMPONENT SPECIFICATION

MATERIAL	316 Stainless Steel
FINISH	Electropolished
WEIGHT	0.81 kg (1.8 lbs)
QUALITY	ISO 9001

Technical Datasheet No: 1318

Tensioner with Tension Indicator - Clevis / Clevis

Part No: AC330/1



APPLICATION

Used in conjunction with bottom anchor in vertical systems to set the cable tension.

Operating pre-tension: 0.8kN (180lbf)

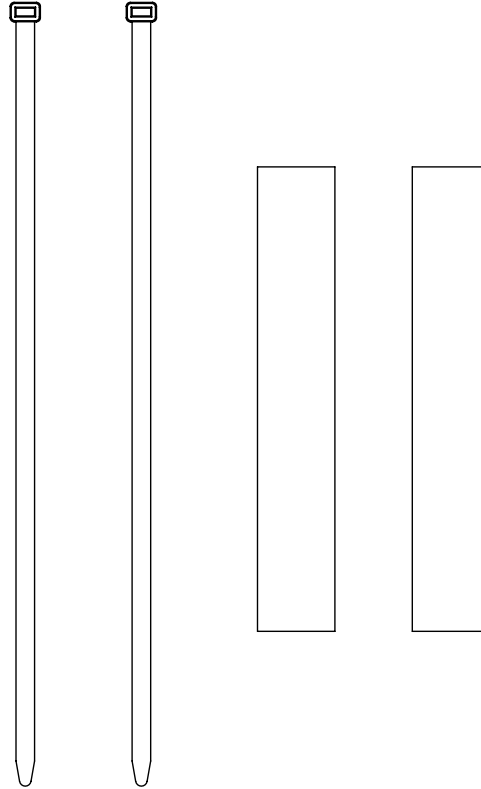
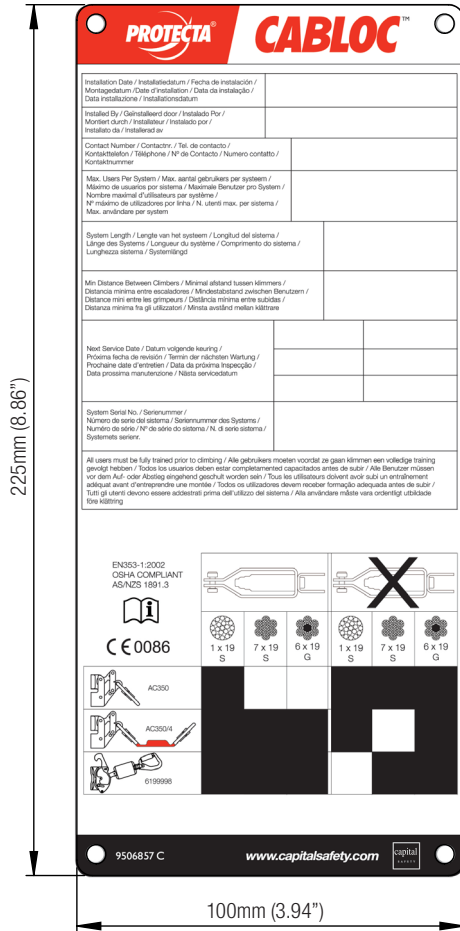
COMPONENT SPECIFICATION

MATERIAL	316 Stainless Steel
FINISH	Electropolished
WEIGHT	0.84 kg (1.9 lbs)
QUALITY	ISO 9001

Technical Datasheet No: 1253

System Tag EMEA Kit

Part No: 7241241



APPLICATION

For use on all Cabloc systems (Languages: English, Spanish, Dutch, German, French, Portuguese, Italian and Swedish).

Must be attached in a visible location near the start of the system. It is completed by the installer with essential information for the user.

Note: Tie wraps and scapa tape included as shown.

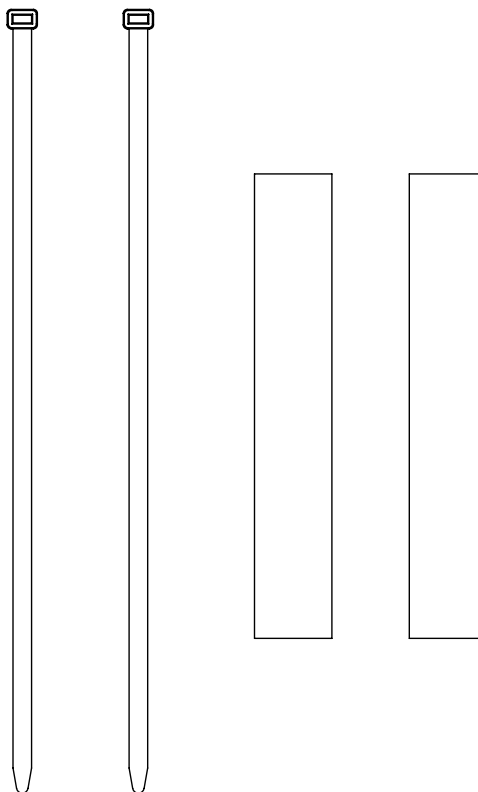
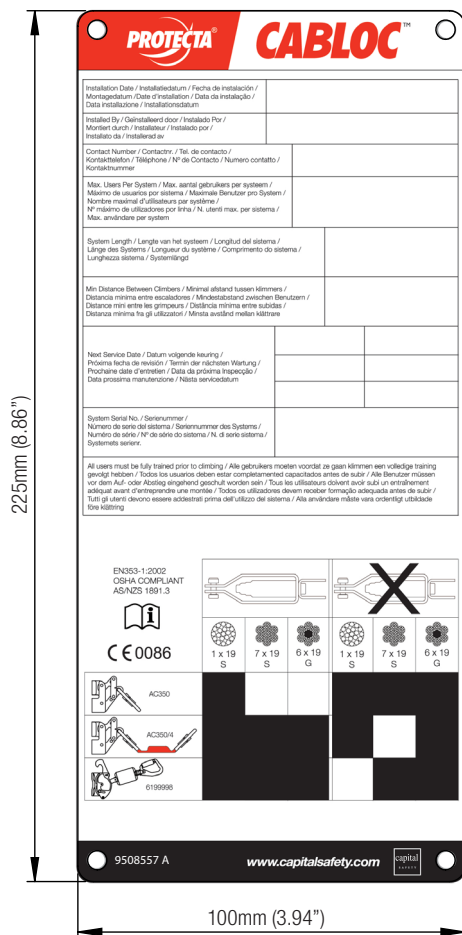
COMPONENT SPECIFICATION

MATERIAL	Aluminium
FINISH	Anodised, Screen Printed, Low temperature baked
QUALITY	ISO 9001

Technical Datasheet No: 1346

System Tag EMEA Kit

Part No: 6191052



APPLICATION

For use on all Cabloc systems (Languages: English, Danish, Greek, Romanian, Polish, Czech and Hungarian).

Must be attached in a visible location near the start of the system. It is completed by the installer with essential information for the user.

Note: Tie wraps and scapa tape included as shown.

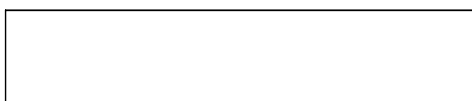
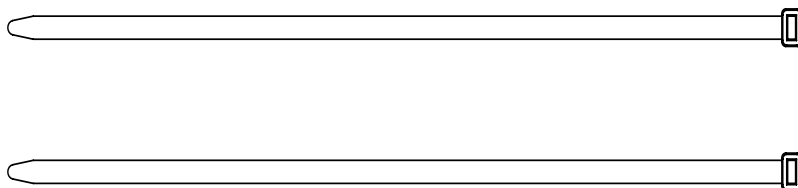
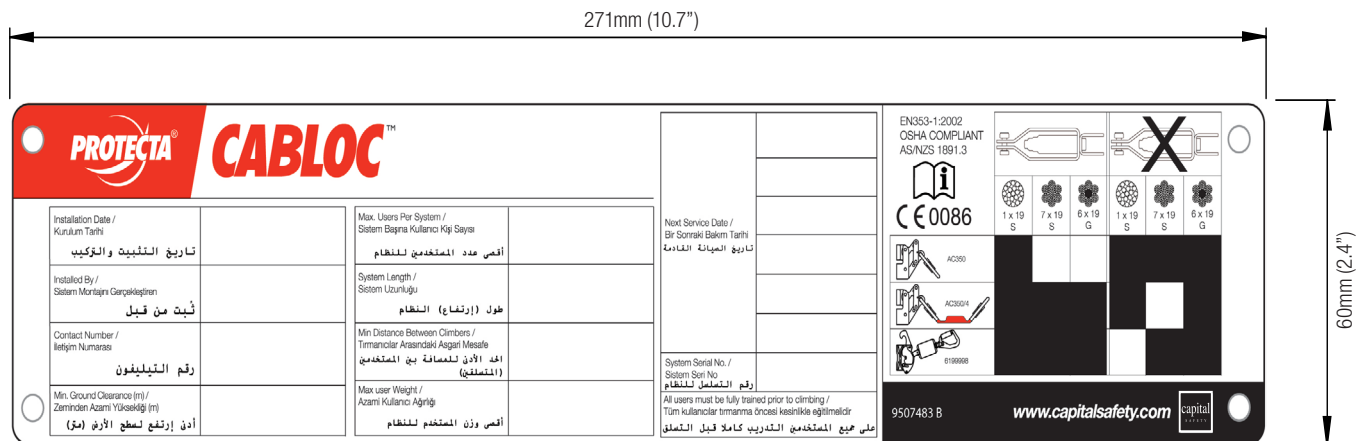
COMPONENT SPECIFICATION

MATERIAL	Aluminium
FINISH	Anodised, Screen Printed, Low temperature baked
QUALITY	ISO 9001

Technical Datasheet No: 1350

System Tag EMEA Kit

Part No: 6191039



APPLICATION

For use on all Cabloc systems (Languages: Turkish Arabic)

Must be attached in a visible location near the start of the system. It is completed by the installer with essential information for the user.

Note: Tie wraps and scapa tape included as shown.

COMPONENT SPECIFICATION

MATERIAL	Aluminium
FINISH	Anodised, Screen Printed, Low temperature baked
QUALITY	ISO 9001



TRUSTED, QUALITY FALL PROTECTION FOR OVER 50 YEARS

With over 50 years experience, Protecta® provides the complete line of fall protection products you can rely on, at exceptional value.



LOCAL DISTRIBUTOR

DISTRIBUTOR

WORLDWIDE LOCATIONS

<p>UK 5a Merse Road North Moons Moat Redditch, Worcester- shire B98 9HL UK t: +44 (0) 1527 548 000 f: +44 (0) 1527 591 000</p>	<p>EUROPE, MIDDLE EAST & AFRICA Le Broc Center Z.I. 1re Avenue – BP15 06511 Carros Le Broc Cedex FRANCE t: +33 (0)4 97 10 00 10 f: +33 (0)4 93 08 79 70</p>	<p>USA 3833 SALA Way Red Wing MN 55066 USA freephone: 800 328 6146 t: +1 (651) 388 8282 f: +1 (651) 388 5065</p>	<p>CANADA 260 Export Boulevard Mississauga Ontario L5S 1Y9 CANADA freephone: 800 387 7484 t: +1 (905) 795 9333 f: 888 387 7484</p>	<p>ASIA No 6 Tuas Avenue 18 638892 SINGAPORE t: +(65) 65587758 f: +(65) 65587058</p>	<p>AUSTRALIA & NEW ZEALAND 95 Derby Street Silverwater NSW 2128 AUSTRALIA freephone: 1800 245 002 (AUS) freephone: 0800 212 505 (NZ) t: +61 2 8753 7600 f: +61 2 8753 7603</p>
---	--	---	---	---	---



www.capitalsafety.com